

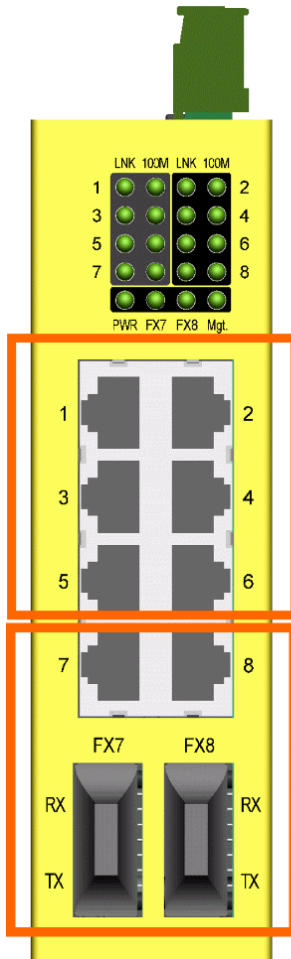
KSD-800M

*Industrial Managed 8-Port Fast Ethernet Switches
with Fiber Connectivity*



KSD-800M

Specifications



Copper Ports

- 10/100 Mbps RJ-45 support
- Auto-negotiation , Auto-MDI/MDI-X

Fiber Ports(combo with RJ-45)

- 100 Mbps Duplex MMF support
- 100 Mbps Duplex SMF support
- Far End Fault function support

- * **Web, Telnet, SNMP management interface**
- * **802.1Q VLAN**
- * **QoS**
- * **Redundant Ring**

Advantage 1: Powerful Management

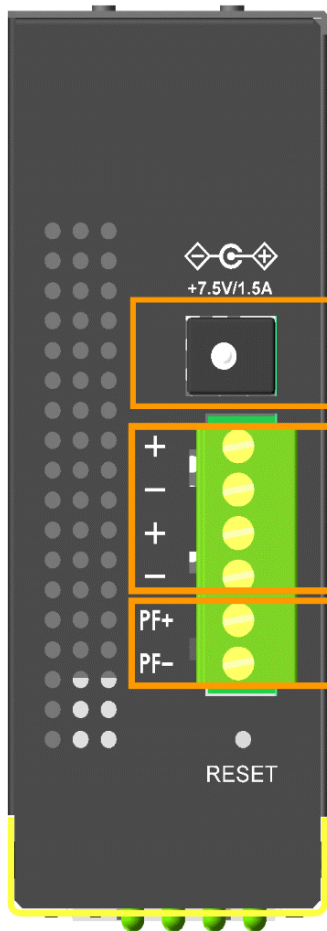


All in one Compact Box



- Web, Telnet, SNMP management
- SNMP event trap
- VLAN
- Redundant Ring
- QoS, Flow Control, WDT Control

Benefit 1: Power Interfaces



DC-Jack

Support AC-DC adapter type power

Terminal block

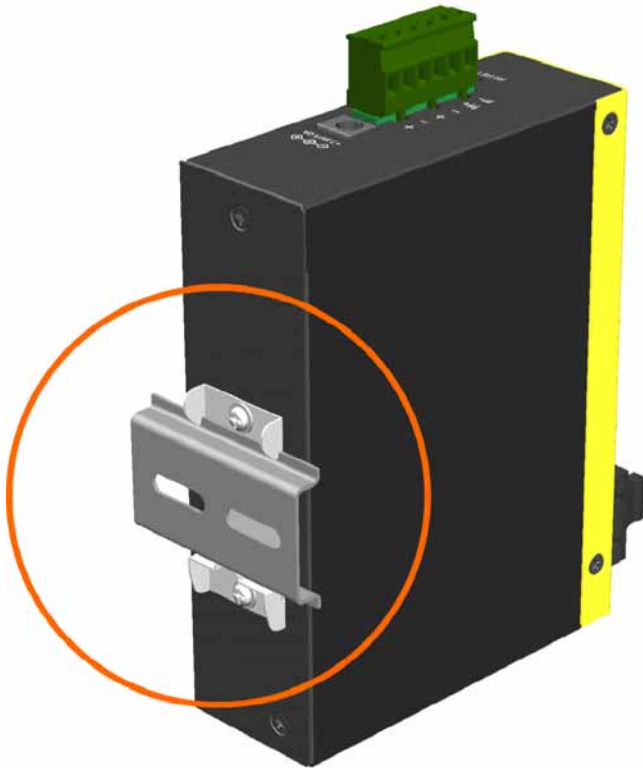
Support industrial power system

Alarm Relay Output

Support external monitoring system

Benefit 2: Mounting Flexibility

Din-Rail Mounting



Panel Mounting



KSD-800M

Benefit 3: Industrial Design

Wide Operating Temperature Range

Typical -20°C ~ 70°C

Wide Operating Voltage Range

+7 ~ +30VDC

Industrial Power Interfaces

Industrial screw terminal block and DC-Jack

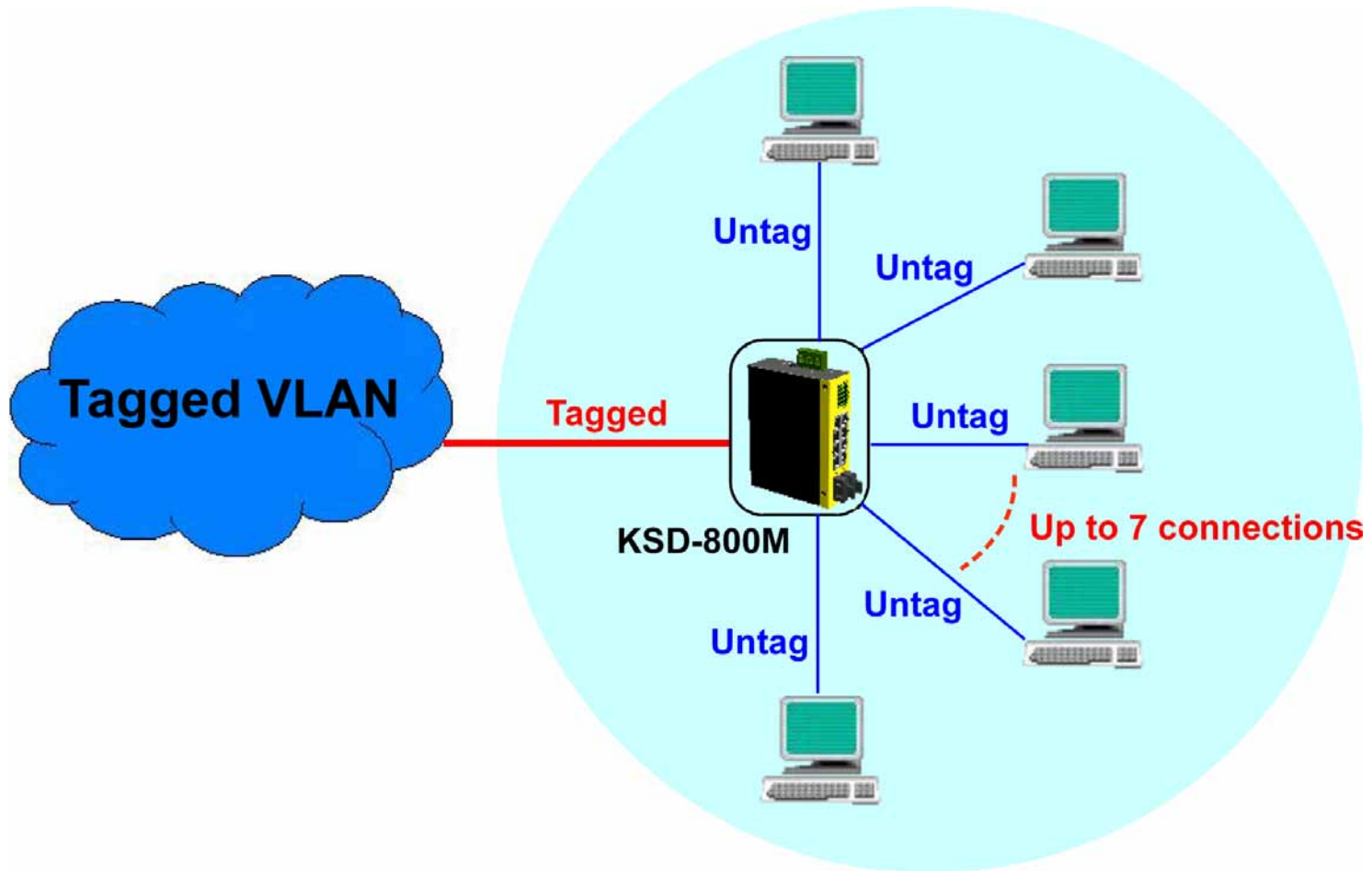
Industrial Mounting Support

Din-rail mounting, Panel mounting, Desktop mounting

EMC & EMI

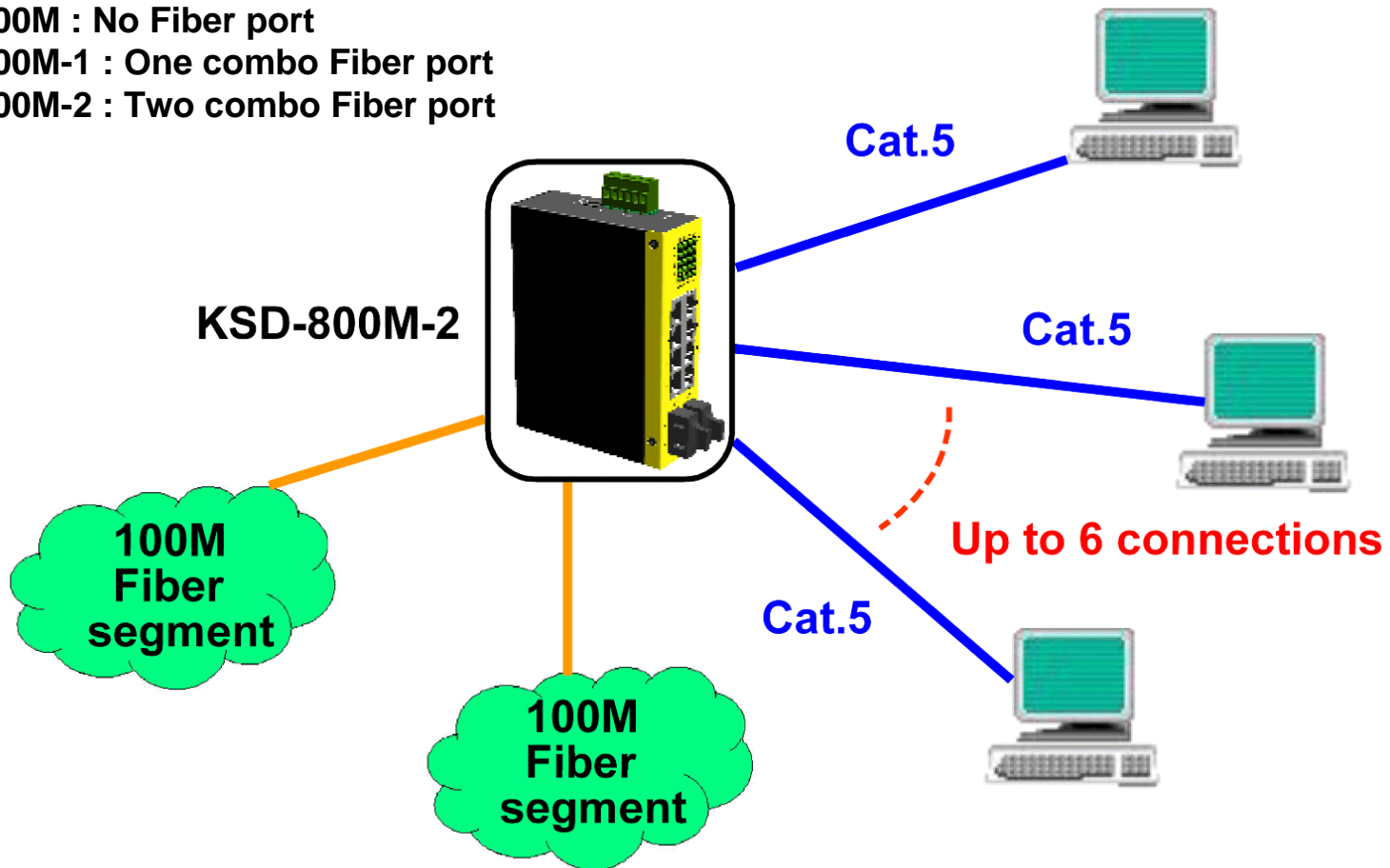
Industrial-rated Emission and Immunity performance

Application 1: Edge Switch for VLAN

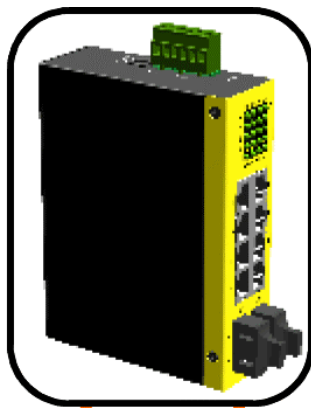


Application 2: Fiber Connections

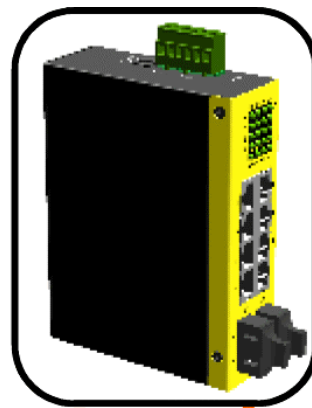
- * KSD-800M : No Fiber port
- * KSD-800M-1 : One combo Fiber port
- * KSD-800M-2 : Two combo Fiber port



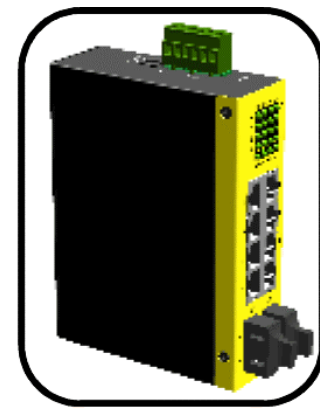
Application 3: Cascading over Fiber



100Mbps
Fiber



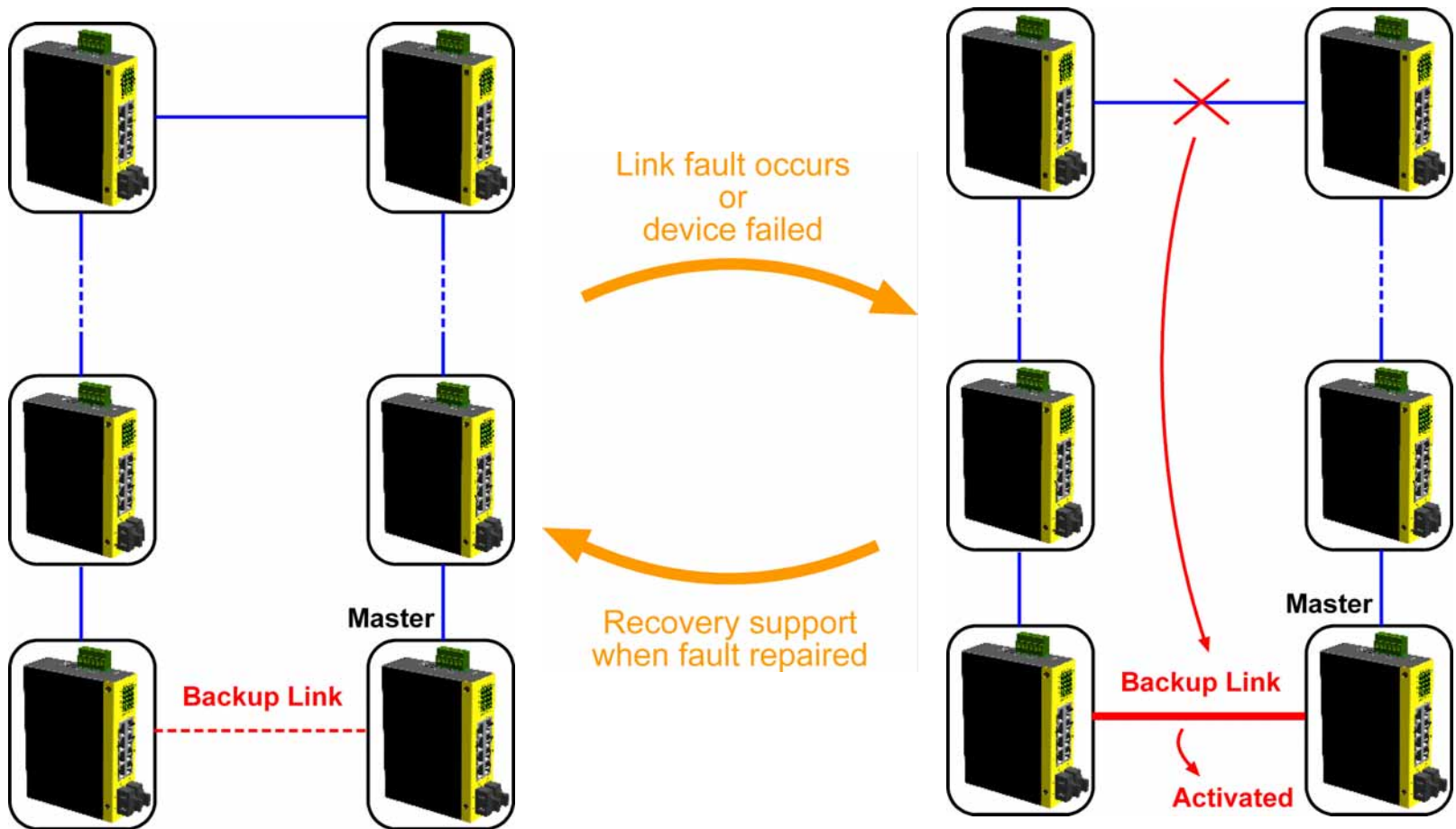
100Mbps
Fiber



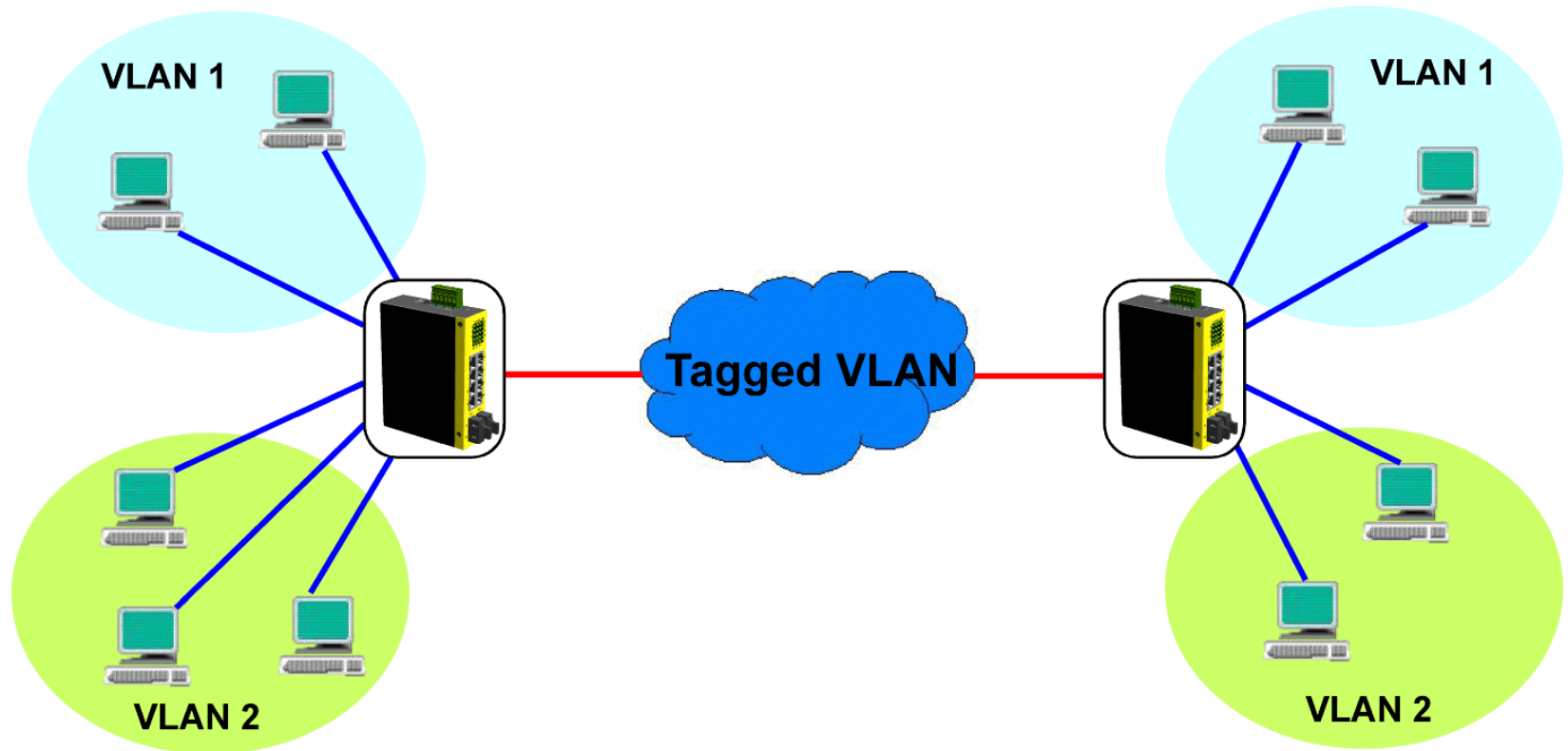
100Mbps
Fiber

100Mbps
Fiber

Application 4 : Redundant Ring



Application 5 : VLAN



Set workgroups belonging to different VLANs