

KGS-612F

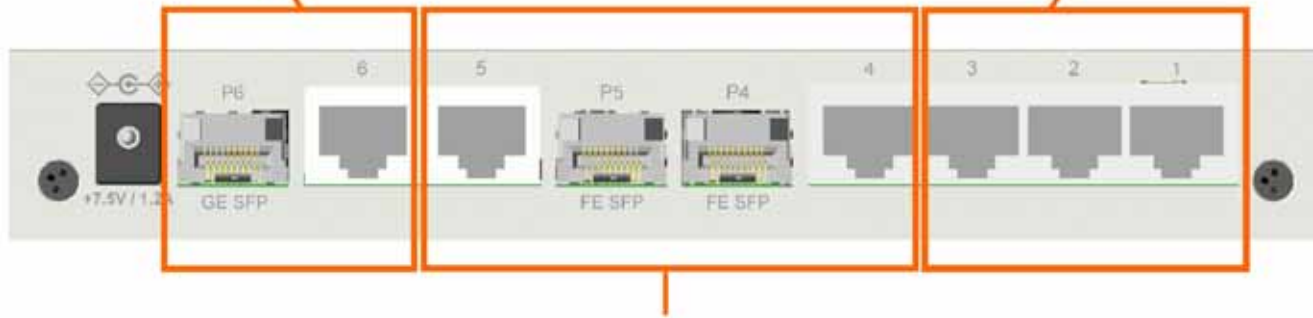
*Web Smart 6-Port Gigabit Ethernet Switch
with Fiber Connectivity*



Specifications

1 combo port (RJ-45+1000M SFP)

3 copper ports (10/100/1000M)



2 combo ports (RJ-45+100M SFP)

- * **Web managed**
- * **802.1Q VLAN**
- * **802.1X**
- * **RSTP**
- * **QoS**

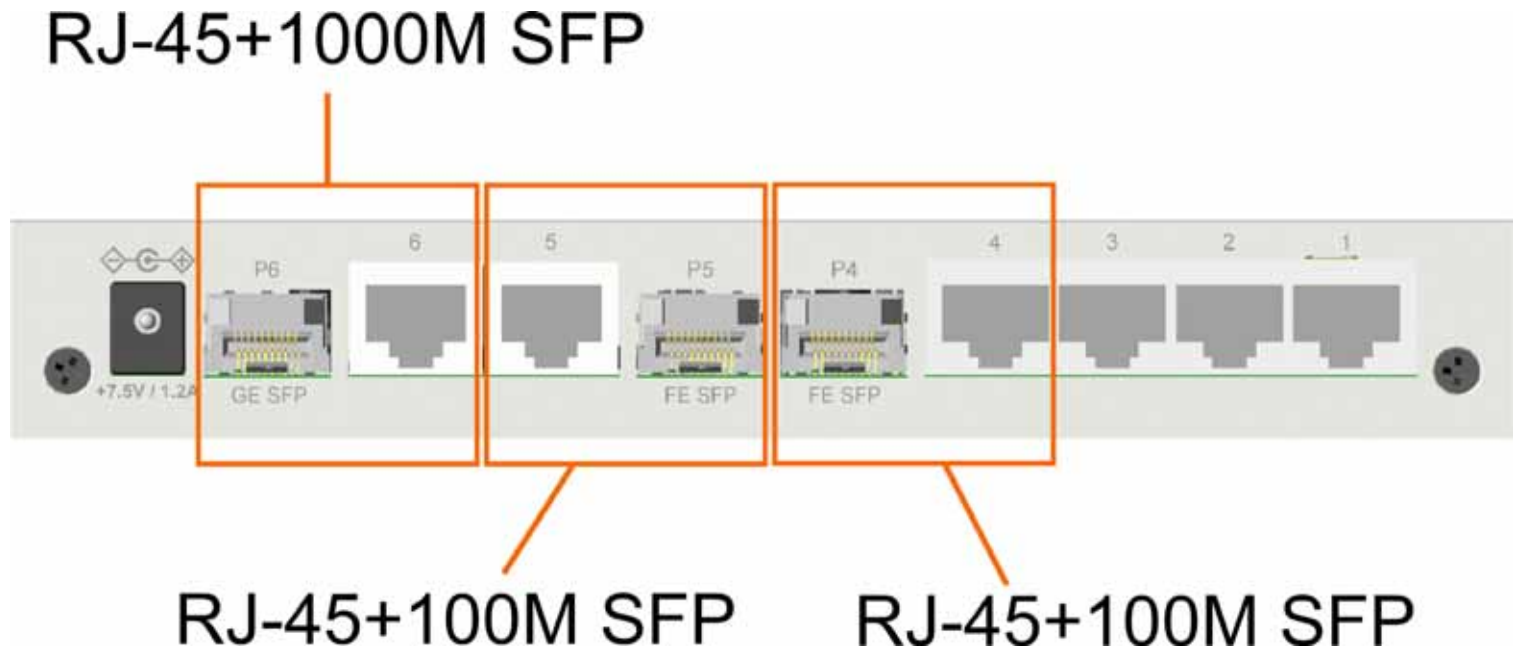
Copper Ports

- 10/100/1000 Mbps RJ-45 support
- Auto-negotiation , Auto-MDI/MDI-X

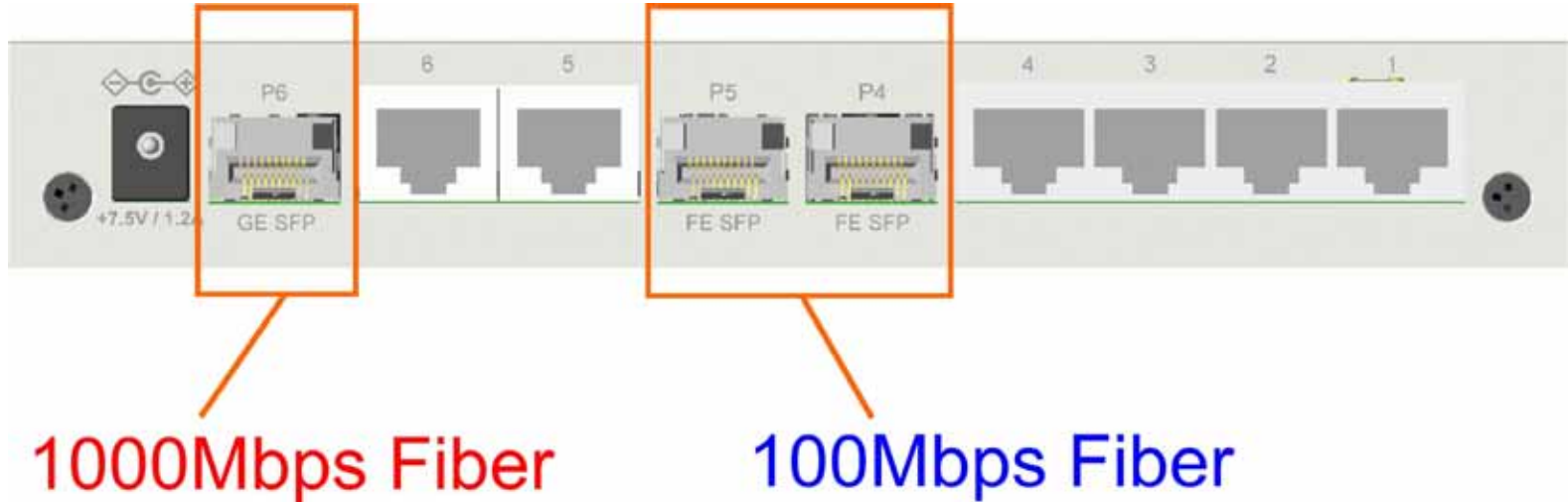
Fiber Ports(combo with RJ-45)

- 100 Mbps SFP support
- 1000 Mbps SFP support

Advantage 1: Three Combo Ports



Advantage 2: GbE & FE Fiber Options



Advantage 3: Powerful Management

Configuration

System
Ports
VLAN
Aggregation
LACP
RSTP
802.1X
Mirroring
QoS
Storm Control

Monitoring

Statistics Overview
Detailed Statistics
LACP Status
RSTP Status
Ping

Maintenance

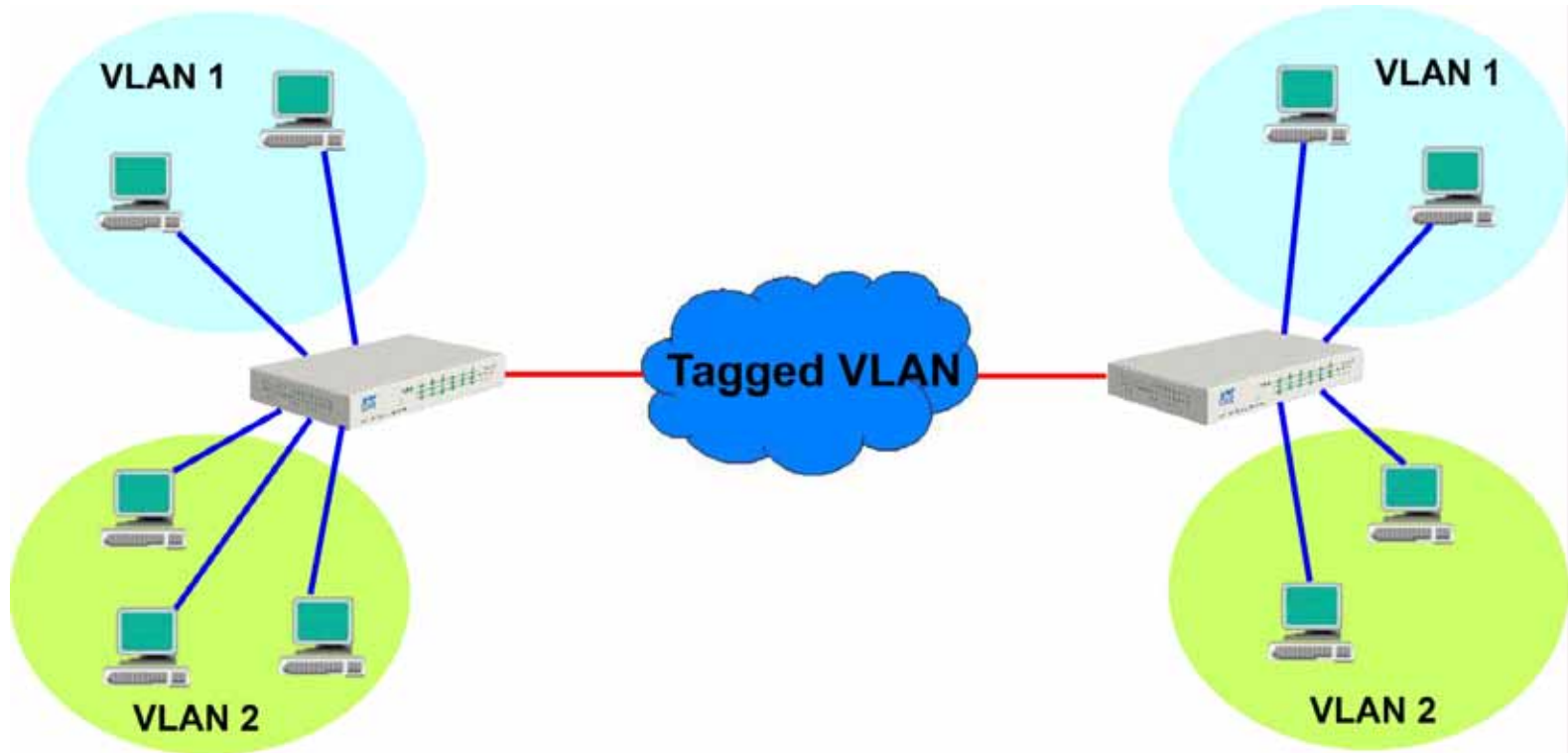
Reboot System
Restore Default
Update Firmware
Logout

All in one Compact Box



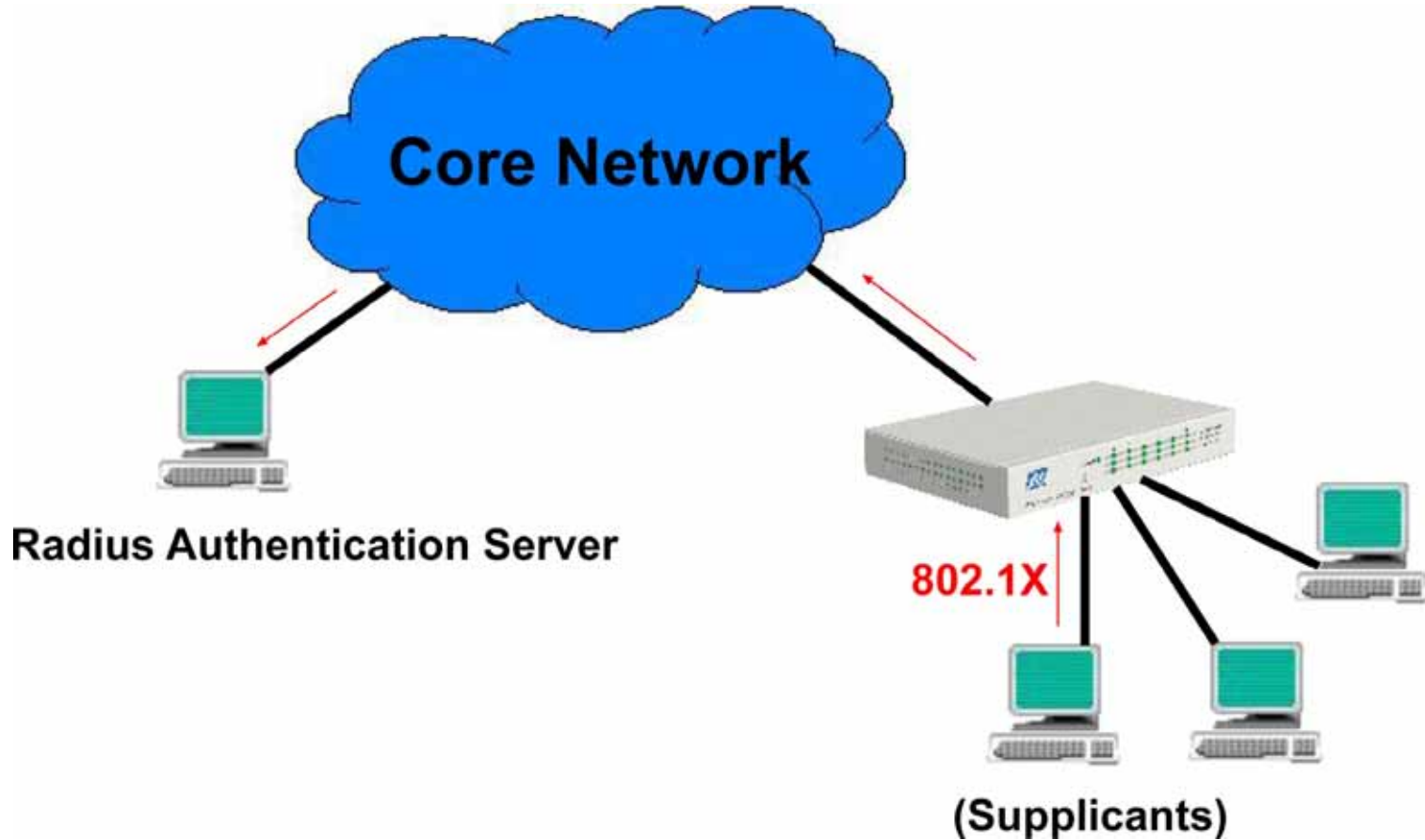
- Web managed, SNMP event trap
- VLAN
- 802.1X
- RSTP, LACP aggregation
- QoS, Storm control, Mirroring

Management 1: VLAN



Set workgroups belonging to different VLANs

Management 2: 802.1X Authentication



Benefit 1 : SFP DDM Support

Port	4	5	6
Identifier	N/A	N/A	SFP transceiver
Connector	N/A	N/A	LC
SONET Compliance	N/A	N/A	OC 48,short reach OC 3,multi-mode short reach
GbE Compliance	N/A	N/A	1000BASE-CX
Vendor Name	N/A	N/A	APAC Opto
Vendor OUI	N/A	N/A	000F99
Temperature	N/A	N/A	34 (C)
Voltage	N/A	N/A	3330 (mV)
TX Power	N/A	N/A	199 (µW)

Basic DDM Information &

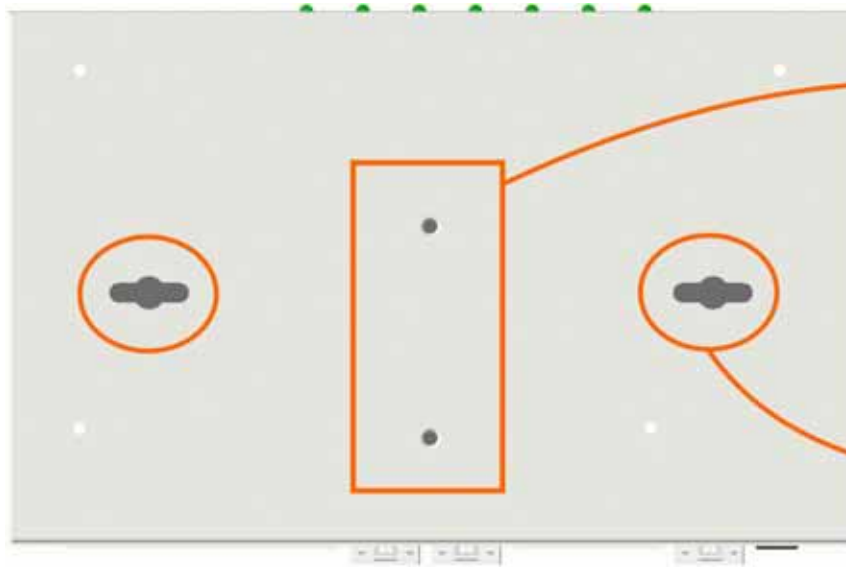
Real-time monitoring

Operating temperature

Operating voltage

Optical Transmitting Power

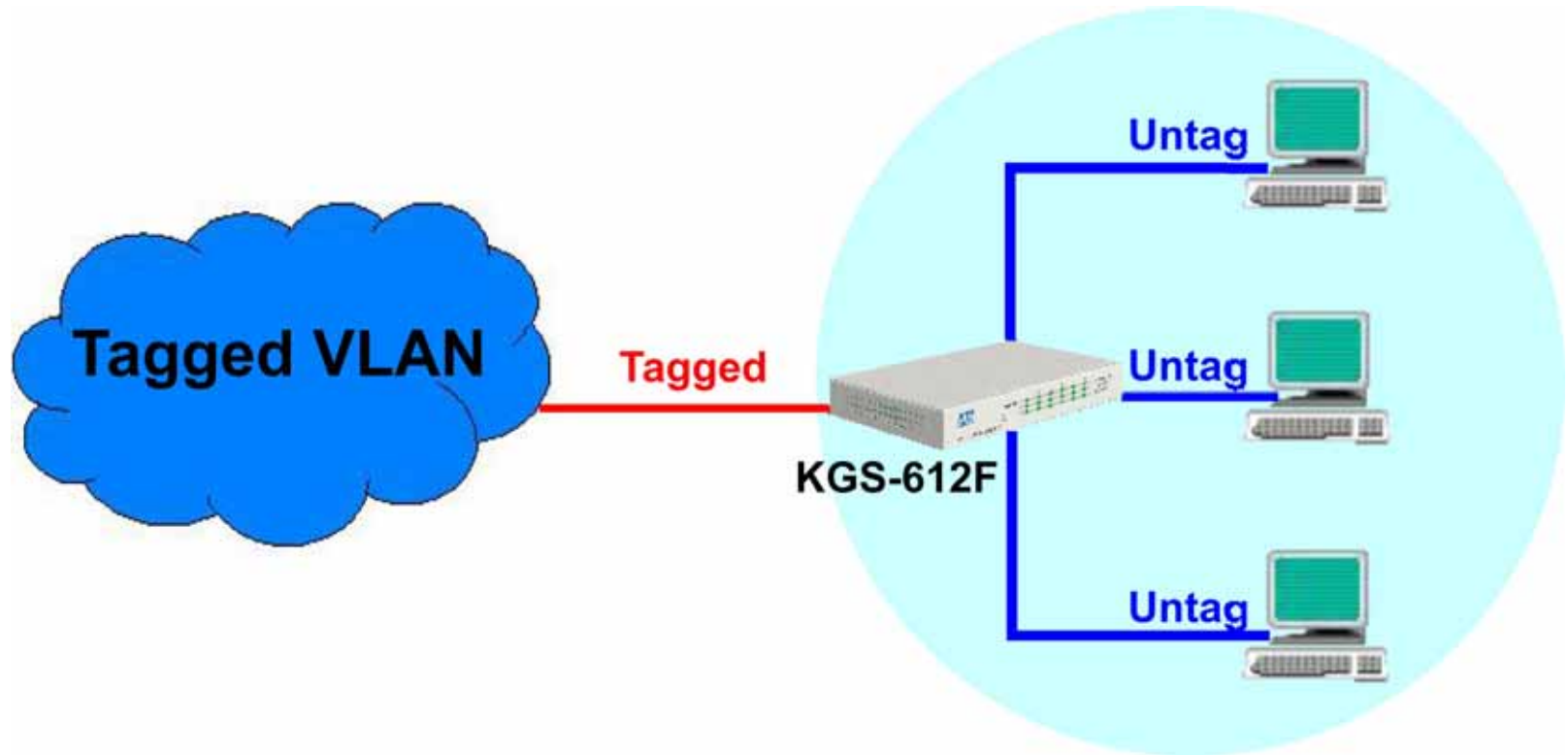
Benefit 2: Mounting Flexibility



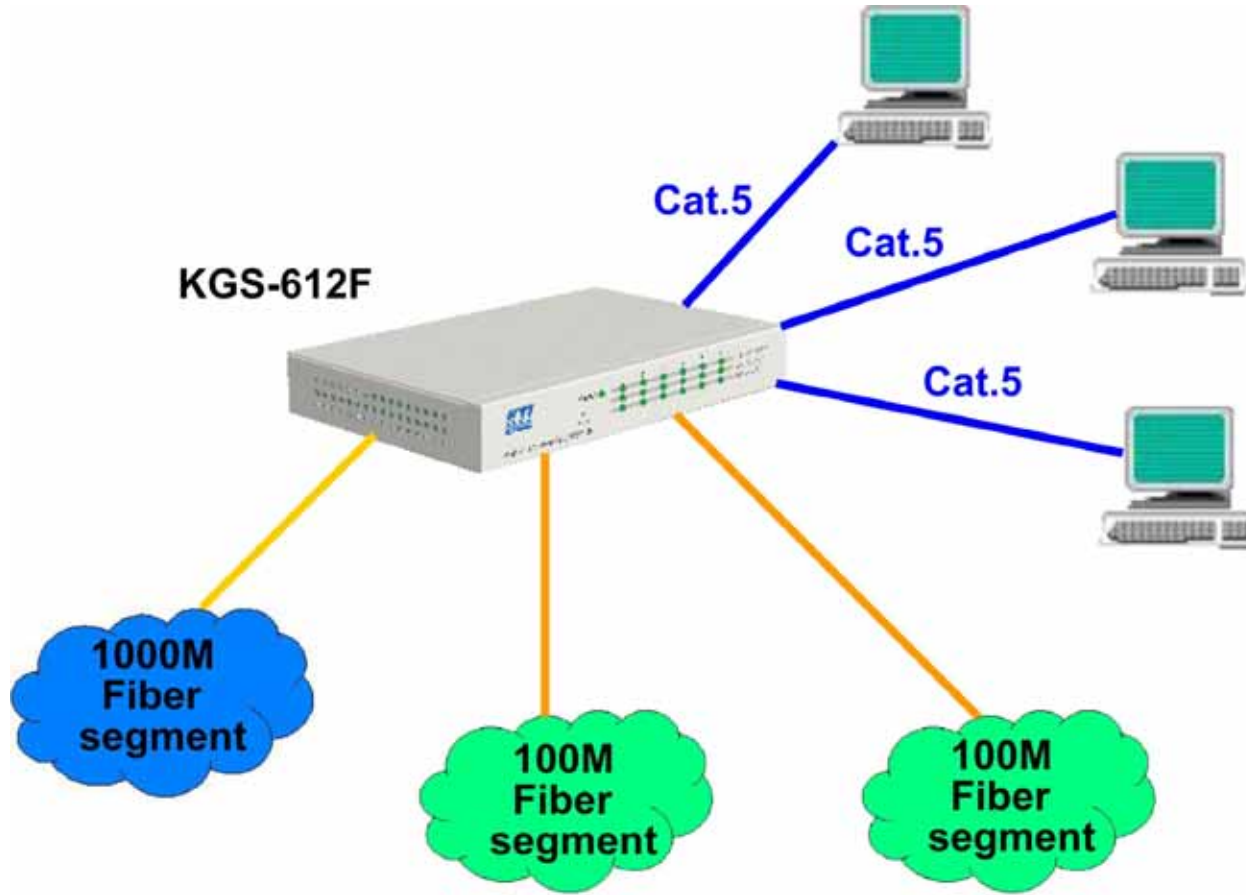
Support
Din-rail mounting &
Panel mounting with
optional brackets

Wall mounting

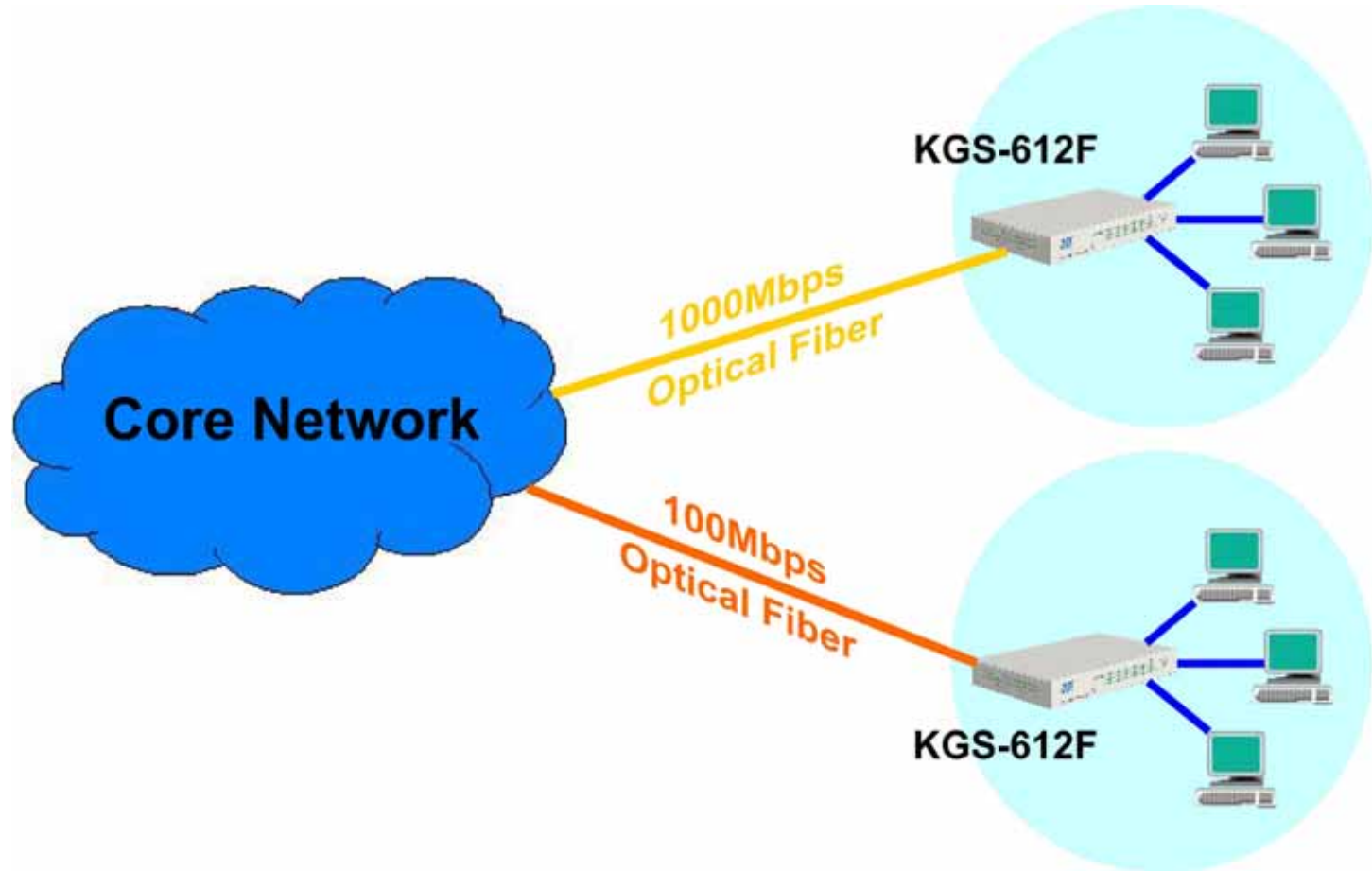
Application 1: Edge Switch for VLAN



Application 2: Fiber Connections



Application 3: FTTx



Application 4: Cascading over Fiber

