

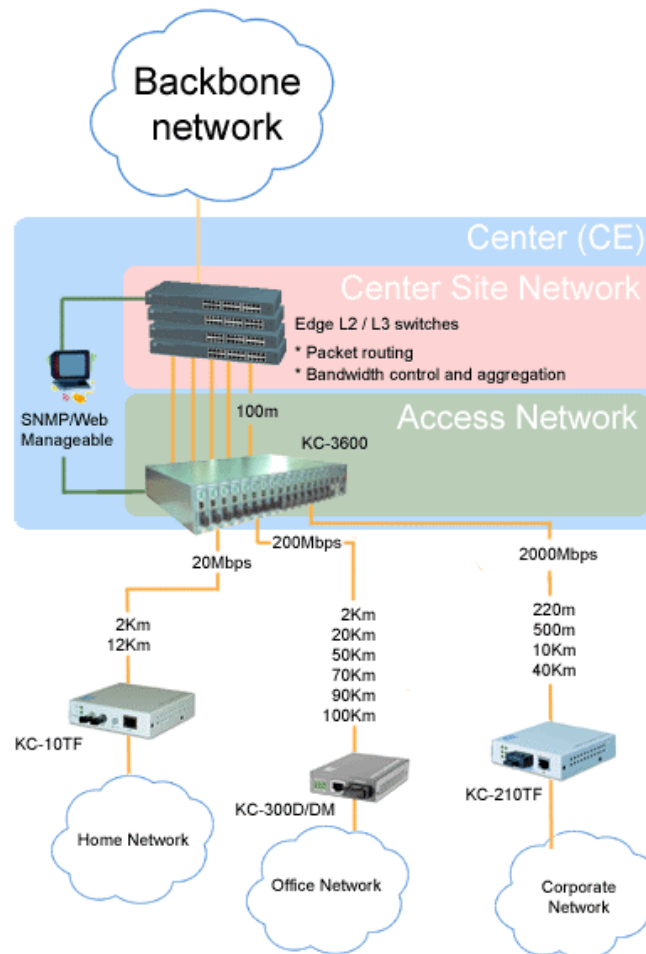
KTI Media Converter Center solutions

Introduction to Media Converter Centers

Media Converter Centers are ideal solutions for large area network or metropolitan area network service applications, so called as Access Network. The Access Networks are often used as a hub for variety carrier media types from sub-networks for ISP edge switches. As being a hub for media converters, media converter centers are capable of remote monitoring, offering an efficient method to control and view media converter states.

Role of Media Converters Centers in Network

The most important role for media converter centers is serving as an agent in the Access Network for Center Site network. (Shown below). The access network receives signals from various types of carrier medias, and provides unified media type to the edge switch through the converter center. Oppositely, media converter centers can be viewed as a centralized location for delivering data to networks via various types of network carrier medias.





KC-3600 Series Modular and Managed Media Converter Centers

As for a system providing network access, the primary concerns have been the future system expansions and maintenance downtime. Aiming to these system requirements, KC-3600 provides 18 converter module slots and redundant power supply design to maintain system flexibility and reliability. Additionally, KC-3600 has hot-swap design to allow quick replacement of system fans and converter modules. Virtually, KC-3600 can be maintained without any system down time. Another noteworthy product is KC-1300, which joins KC-3600 to form a complete KTI media converter center solution.



KC-1300 Managed Media Converter Centers

KC-1300 media converter center is designed to support up to 16 KTI KC-300D/DM standalone media converters. While featuring the similarities of KC-3600, standalone modules provide loop back test function and remote media converter's TP port status monitoring function additionally to ease network maintenance.



Advantage of KTI Media Converter Centers

- Support 19" rack-mount installation.
- Supported by wide range of media converter modules.
- Hot Swap design of System Fans, Converter modules, Power supply units.
- Optional dual AC / -48 DC power input design for power redundancy.
- Full management support, including SNMP, Telnet, Web, Console, trap.

**Ordering information**

| System Model | KC-3600-1A | KC-3600-2A | KC-3600-1D | KC-3600-2D |
|-----------------|------------|------------|------------|------------|
| Number of power | 1 AC Power | 2 AC Power | 1 DC Power | 2 DC Power |
| Management | Managed | Managed | Managed | Managed |
| Input Voltage | 100~240VAC | 100~240VAC | -48VDC | -48VDC |

| System Model | KC-3600L-1A | KC-3600L-2A | KC-3600L-1D | KC-3600L-2D |
|-----------------|-------------|-------------|-------------|-------------|
| Number of power | 1 AC Power | 2 AC Power | 1 DC Power | 2 DC Power |
| Management | Unmanaged | Unmanaged | Unmanaged | Unmanaged |
| Input Voltage | 100~240VAC | 100~240VAC | -48VDC | -48VDC |

| System Model | KC-1300-1A | KC-1300-2A | KC-1300-1D | KC-1300-2D |
|-----------------|--------------|--------------|--------------|--------------|
| Number of power | 1 x AC Power | 2 x AC Power | 1 x DC Power | 2 x DC Power |
| Management | Managed | Managed | Managed | Managed |
| Input Voltage | 90~264VAC | 90~264VAC | -48VDC | -48VDC |

| System Model | KC-1300L-1A | KC-1300L-2A | KC-1300L-1D | KC-1300L-2D |
|-----------------|--------------|--------------|--------------|--------------|
| Number of power | 1 x AC Power | 2 x AC Power | 1 x DC Power | 2 x DC Power |
| Management | Unmanaged | Unmanaged | Unmanaged | Unmanaged |
| Input Voltage | 90~264VAC | 90~264VAC | -48VDC | -48VDC |