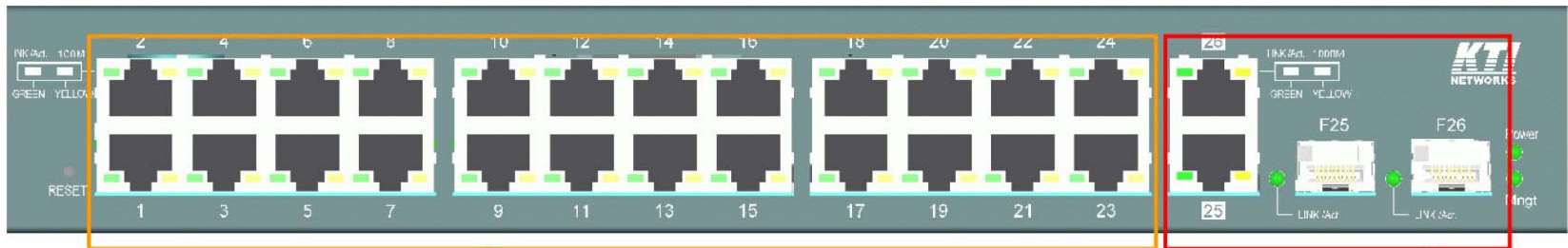


KFS-2621

*Web Smart 24-Port 10/100 Fast Ethernet
Switch with 2 Gigabit Combo Ports*



Specifications



24 copper ports (10/100M)

2 combo ports (RJ-45+1000M SFP)

- * **Web managed**
- * **802.1Q VLAN**
- * **RSTP**
- * **LACP**
- * **QoS**

Fast Ethernet Copper Ports

- 10/100 Mbps RJ-45 support
- Auto-negotiation , Auto-MDI/MDI-X

Gigabit Fiber Ports (combo with RJ-45)

- 10/100/1000 Mbps RJ-45 support
- 1000 Mbps SFP support

Advantage 1: Two Gigabit Uplinks



Fiber Options

- Easy migration
- Easy upgrade
- Easy maintenance

Combo Media

- 10/100/1000M Copper
- 1000M SFP Fiber

Advantage 2: Powerful Management

Configuration

System Configuration
Port Configuration
Port Mirroring
Bandwidth Control
Broadcast Storm Control
VLAN mode
VLAN Member
Multi to 1 VLAN Setting
QoS Priority Mode
Port, 802.1p ,IP/DS based
TCP/UDP Port Based
MAC Address Binding
TCP/UDP Filter
STP Bridge Settings
STP Port Settings
Link Aggregation Settings
Miscellaneous

Monitoring

Port Counter

Maintenance

Backup/Recovery
Reboot System
Restore Default
Update Firmware
Logout

All in one Compact Box



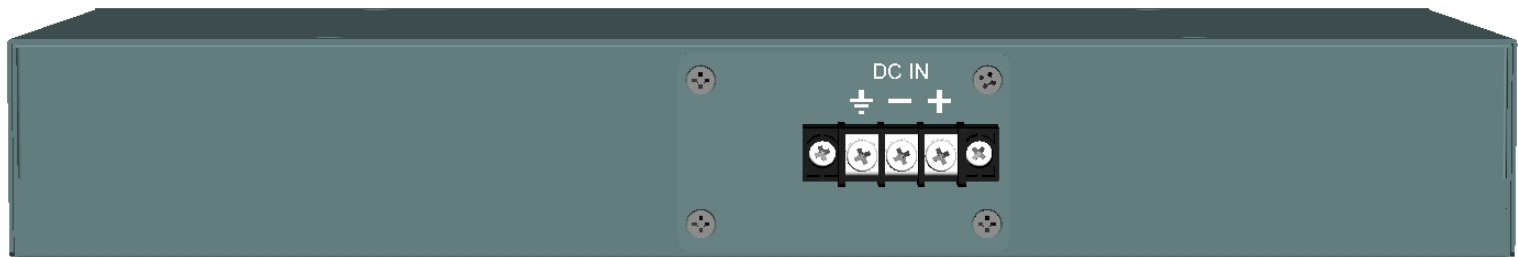
- Web Managed
- VLAN , QoS , IGMP Snooping
- RSTP, LACP Aggregation
- Broadcast Storm control, Mirroring
- Bandwidth control
- Static MAC address filtering

Advantage 3: Power Options

AC Power Input (KFS-2621-S)



DC Power Input (KFS-2621-D)



Advantage 4:

Wide Operating Temperature Range

Wide Operating Temperature Range

Typical -20°C ~ 60°C, No Fan Design

Wide Operating Voltage Range

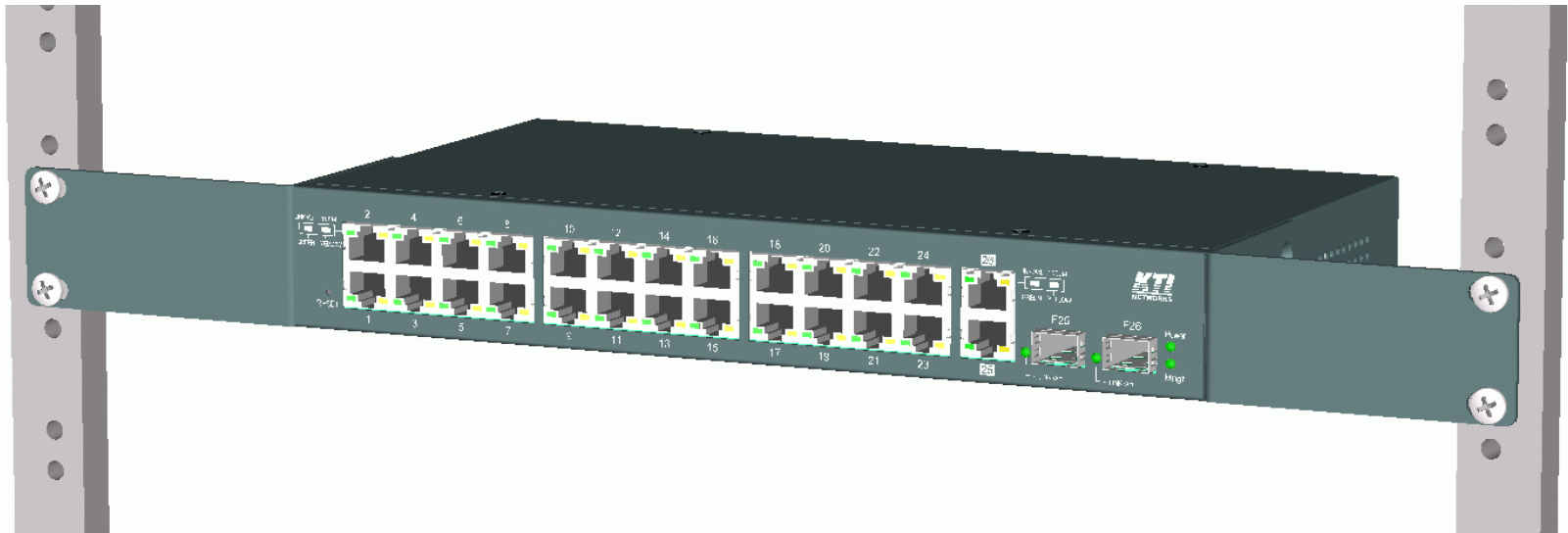
KFS-2621-S :110~240 VAC, 50/60Hz

KFS-2621-D :+36 ~ +72 VDC

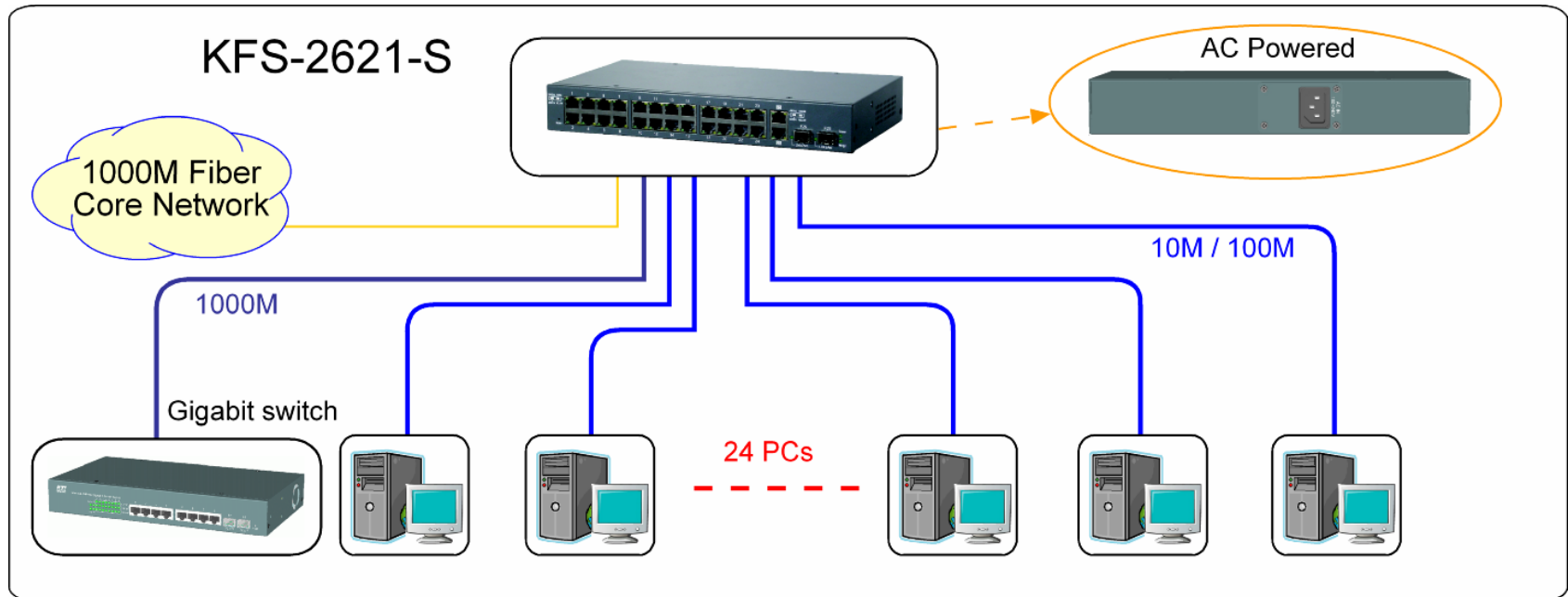
Industrial Mounting Support

Desktop mounting, 19" Rack Mounting

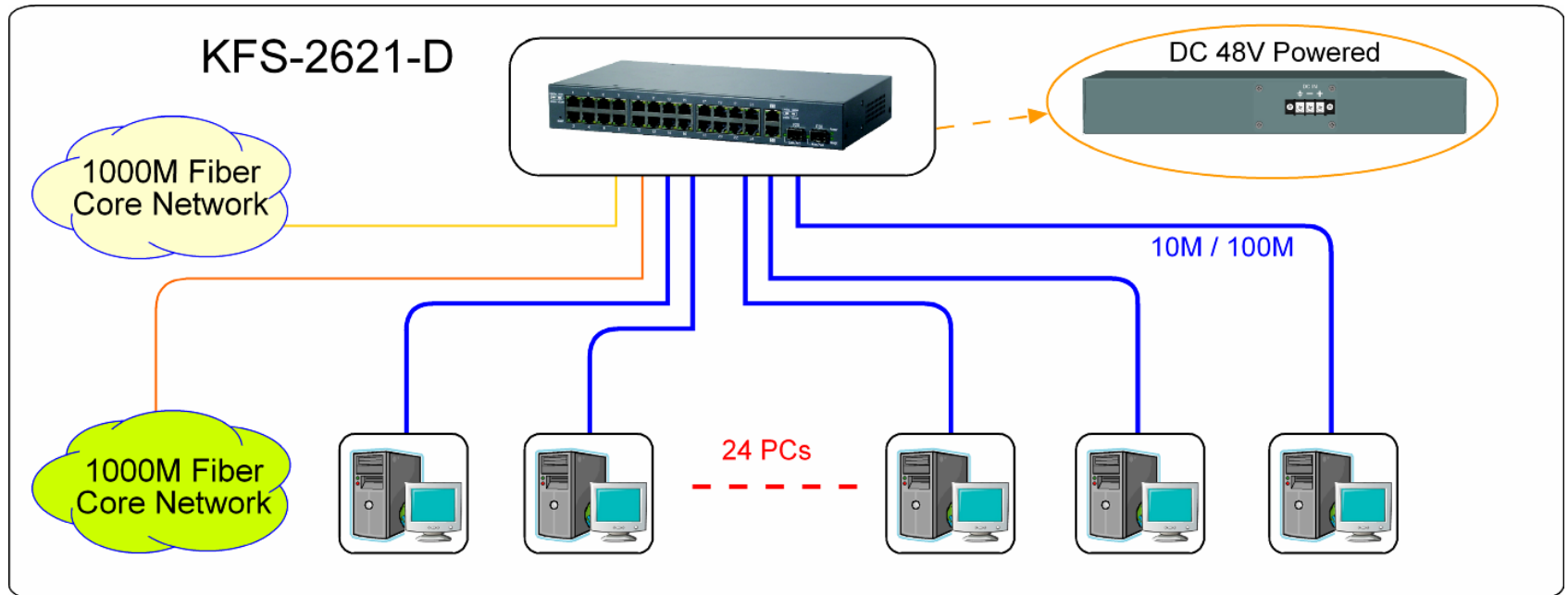
Benefit: 19" Rack Mounting



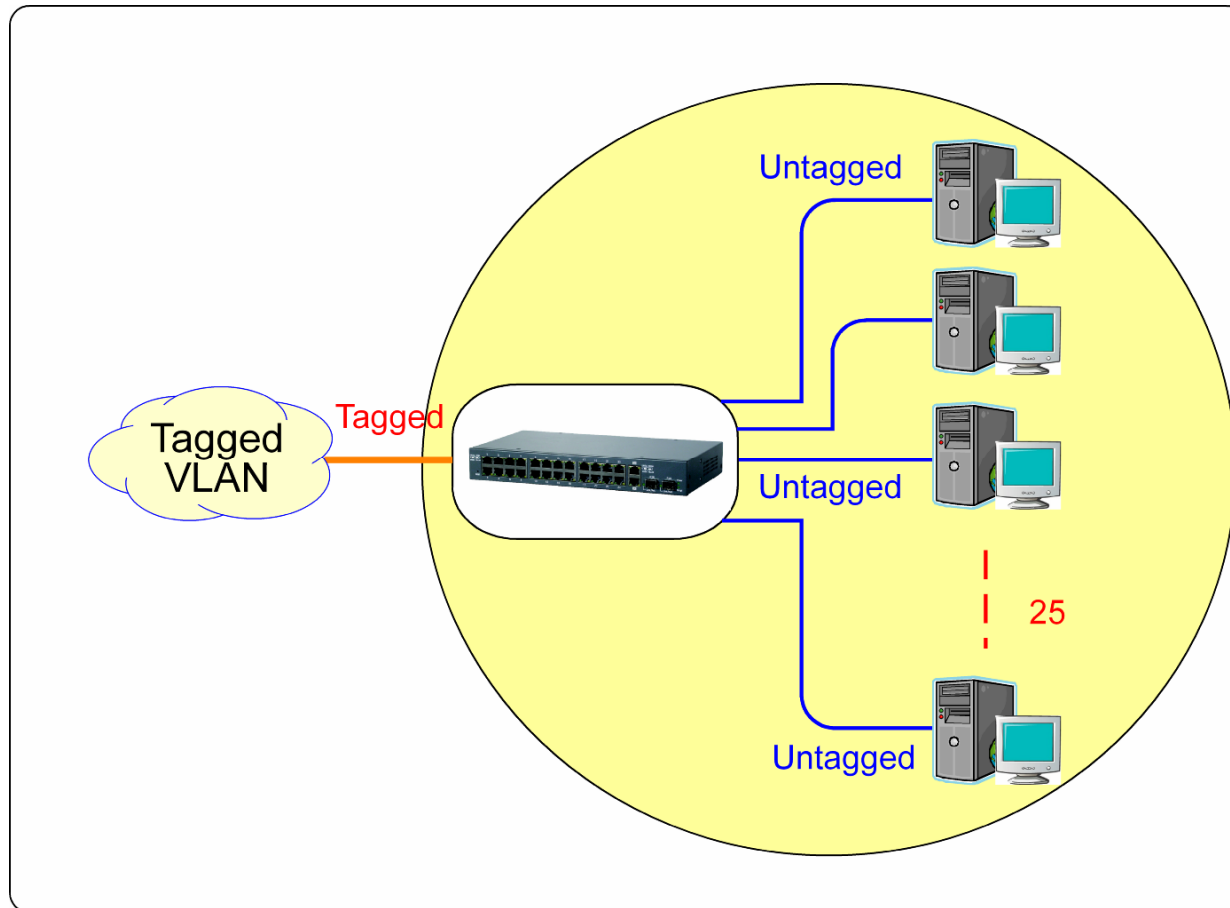
Application 1: Switch connection with AC Power



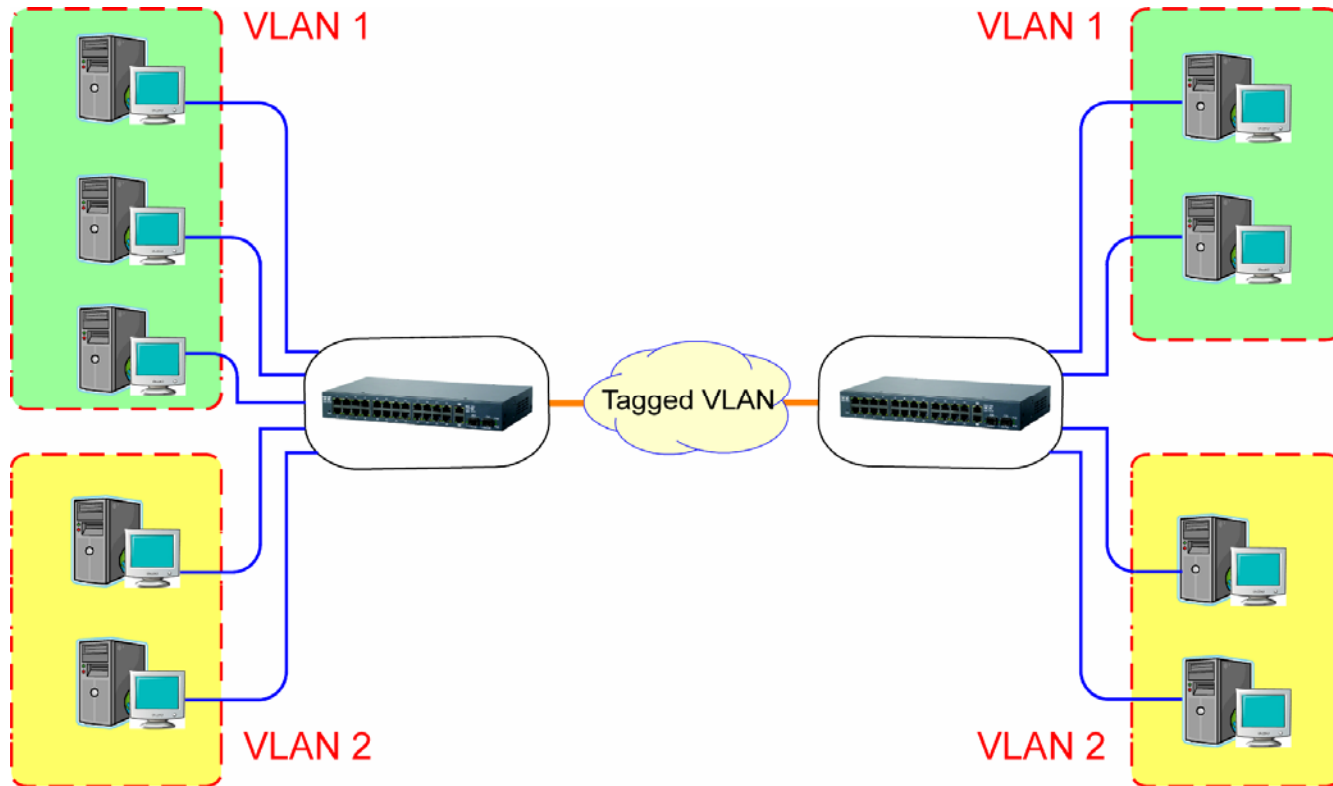
Application 2: Switch connection with DC Power



Application 3: Edge Switch for VLAN



Application 4: VLAN



Set workgroups belonging to different VLANs