

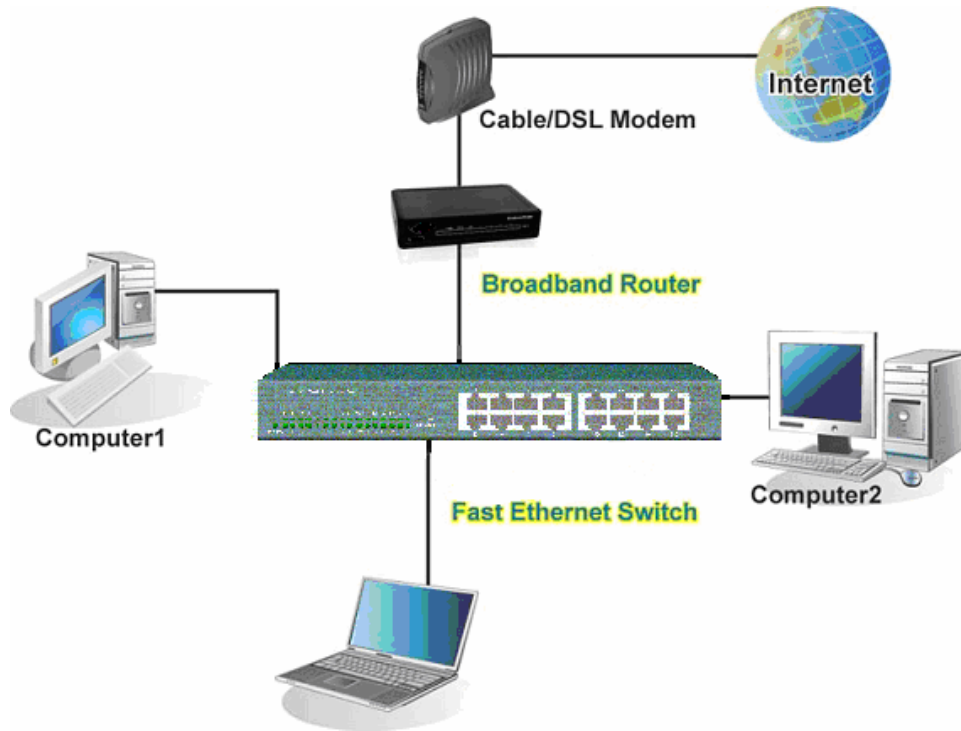


**KS-116**  
**16-Port 10/100 Workgroup Switch**  
**User's Guide**



# 1. Introduction

The 10BASE-T/100BASE-TX Switches which are high-performance Fast Ethernet switches designed for the network core. It provides 16 10BASE-T/100BASE-TX ports that can significantly improve the performance of your network's backbone, and deliver the throughput needed to support a broad range of advanced network applications. With Fast Ethernet Switches high performance bandwidth, it provides the quickest solution to meeting the growing demands on your network's limited resources.



# 2. Features

- Complies with the IEEE 802.3 10Base-T Ethernet and IEEE 802.3u 100Base-TX Fast Ethernet standard.
- 16-port 10/100Mbps Auto-Negotiation.
- Half/Full duplex capability for each port.
- Support TP interface Auto-MDI/MDI-X function for auto TX/RX swap.
- Automatic Source MAC Address Learning and Aging.
- Support up to total 4K unicast addresses entries.
- Support up to 2Mbits data buffer.
- Support Store & Forward architecture and performs forwarding and filtering.
- Broadcast Storming Filter.

- Runt and CRC Filtering eliminates erroneous packets to optimize the network bandwidth.
- Support to handle up to 1522 bytes packet.
- LED indicators for simple diagnostics and management.
- Internal switching power supply.
- Plug and Play.

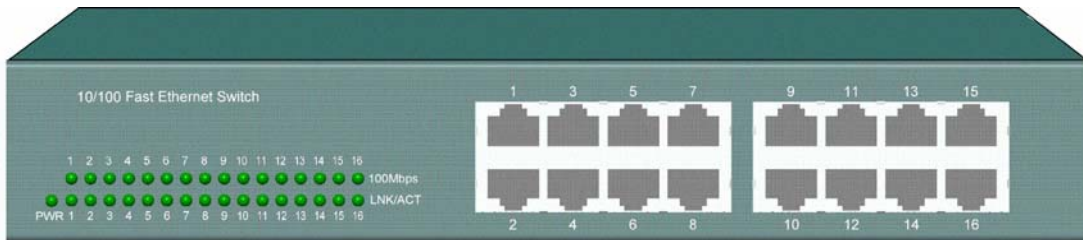
### 3. Package Contents

- Rackmount Kit.
- User guide.
- Power cord.
- 10/100Mbps Fast Ethernet Switch

### 4. Hardware Introduction

#### 4.1 Front Panel

The unit front panel provides a simple interface monitoring the Switch. See the chart in section 4.2 for the status of each LED denotes.



#### 4.2 LED Displays

LED Function	Color	Description
PWR	Green	Lit: Power on
LNK/ACT	Green	Lit: Indicates there is a link Flash: indicates there is an activity
10/100	Green	Lit: 100Mbps Unlit: 10Mbps

### 4.3 Rear Panel

The rear panel of the 16-port Fast Ethernet Switch indicates an AC inlet, which accepts 100-240VAC 50-60Hz power input.



## Specifications

<b>Standard</b>	IEEE 802.3 10Base-T Ethernet IEEE 802.3u 100Base-TX Fast Ethernet
<b>Data Transfer Rate</b>	- Ethernet : 10Mbps (half-duplex) 20Mbps (full-duplex) - Fast Ethernet : 100Mbps (half-duplex) 200Mbps (full-duplex)
<b>Network cable</b>	-100Base-TX UTP/STP category 5 cable -10Base-T UTP/STP category 3 or 5 cable
<b>Ports</b>	16 10/100Mbps Auto-MDI / MDI-X Ports
<b>LED indicators</b>	System – Power LED Individual port – link/activity and speed LEDs
<b>Dimension</b>	283mm(W) x 178mm(D) x 44mm(H)
<b>Temperature</b>	Operating 0°C to 50°C (32° to 122° F) Storage -20°C to 70°C (-4° to 158° F)
<b>Humidity</b>	Operating 10% to 90% RH, Non-condensing Storage 5% to 90% RH, Non-condensing
<b>Power Input</b>	100 – 240VAC, 50 / 60Hz, Auto-sensing
<b>Registrations</b>	FCC Part 15 Class B, CE

## **5. FCC Warning**

This equipment has been tested and found to comply with the regulations for a Class B digital device, pursuant to Part 15 of the FCC Rules. These limits are designed to provide reasonable protection against harmful interference when the equipment is operated in a commercial environment. This equipment generates, uses, and can radiate radio frequency energy and, if not installed and used in accordance with this user's guide, may cause harmful interference to radio communications. Operation of this equipment in a residential area is likely to cause harmful interference, in which case the user will be required to correct the interference at his own expense.

- Reorient the receiving antenna.
- Increase the separation between the equipment and receiver.
- Connect the equipment into an outlet on a circuit in a different room that to which the receiver is connected.
- Consult the dealer or an experienced radio/TV technician for help.

## **6. CE Mark Warning**

This is a Class A product. In a domestic environment, this product may cause radio interference, in which case the user may be required to take adequate measures.



Waste electrical and electronic products must not be disposed of with household waste. Please recycle where facilities exist. Check with you Local Authority or Retailer for recycling advice.

