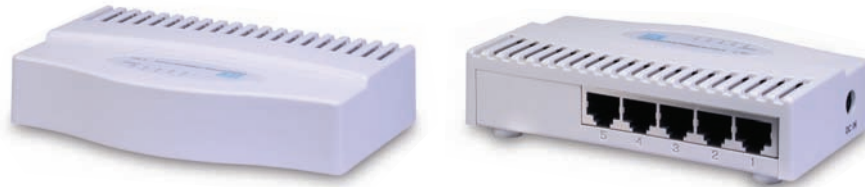




KS-MINI-5P



5-Port 10/100 L2 SOHO Switches

Key Features:

- Provide 5 10/100Mbps Fast Ethernet ports
- All ports support auto-negotiation and auto-MDI/MDI-X detection
- Non-blocking wire-speed reception and transmission and non-head-of-line-blocking forwarding
- Store-and-Forward switching method
- Self learning for active MAC addresses up to 1K entries
- Physical layer port Polarity Detection and Correction function
- Comprehensive front-panel diagnostic LEDs

Specifications:

Standards	IEEE 802.3 10Base-T, IEEE 802.3u 100Base-TX
Cables	10Base-T: Cat.3, 4, 5 or higher (100 meters max.) 100Base-TX: Cat.5, 5e or higher (100 meters max.)
Number of Ports	5 x 10/100Mbps Auto-negotiation Auto-MDIX Ethernet ports
Network Data Transfer Rate	Ethernet: 10Mbps (Half-duplex) 20Mbps (Full-duplex) Fast Ethernet: 100Mbps (Half-duplex) 200Mbps (Full-duplex)
MAC Address Table	1K entries
LEDs	Per Unit : Power Per Port : Link/Act
Power	+7.5VDC, 1A
Power Consumption	KS-MINI-5P : 2.5 watts. (max.)
Dimension	123 x 30 x 76 mm (WxHxD)
Environment	Operation Temperature: 0°C ~ 40°C Storage Temperature: -10°C ~ 70°C Relative Humidity: 10% ~ 90% non-condensing
Approval	FCC Class B, CE mark Class B



FCC Part 15, Class B
CISPR 22 Class B

Katron Technologies Inc.

15F-7, No. 79, Sec. 1, Hsin Tai Wu Rd.,
Hsi-chih District, New Taipei City, Taiwan
Tel: 886-2-2698-3878
Fax: 886-2-2698-3873
E-mail: kti@ktinet.com.tw
URL: <http://www.ktinet.com.tw>

KTI Networks Inc.

10415-A Westpark Drive, Houston,
TX 77042. U.S.A.
Tel: 1-713-266-3891
Fax: 1-713-914-0555
E-mail: contact@ktinet.com
URL: <http://www.ktinet.com>

Trademarks: All brand names are trademarks or registered trademarks of their respective holders.
This information is subject to change without prior notice.