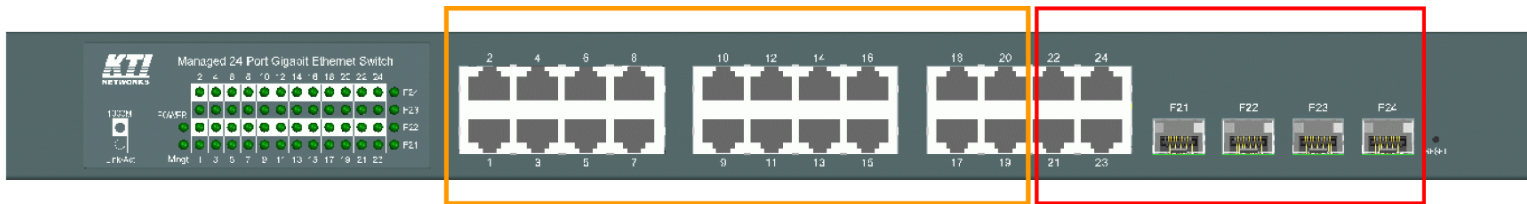


# KGS-2421

*Managed 24-Port Gigabit Ethernet Switches  
with 4 SFP slots*



# Specifications



20 copper ports (10/100/1000M)

4 combo ports (RJ-45+1000M SFP)

- \* **Web/Console/Telnet/SNMP managed**
- \* **SSH/HTTPS Supports**
- \* **802.1Q VLAN**
- \* **802.1X access control**
- \* **STP/RSTP/MSTP**
- \* **QoS**
- \* **ACL Configuration**
- \* **IGMP snooping**
- \* **Enhanced security**

## **Copper Ports**

- 10/100/1000 Mbps RJ-45 support
- Auto-negotiation , Auto-MDI/MDI-X

## **Fiber Ports (combo with RJ-45)**

- 1000 Mbps SFP support
- DDM support

# Advantage 1: Combo with SFP



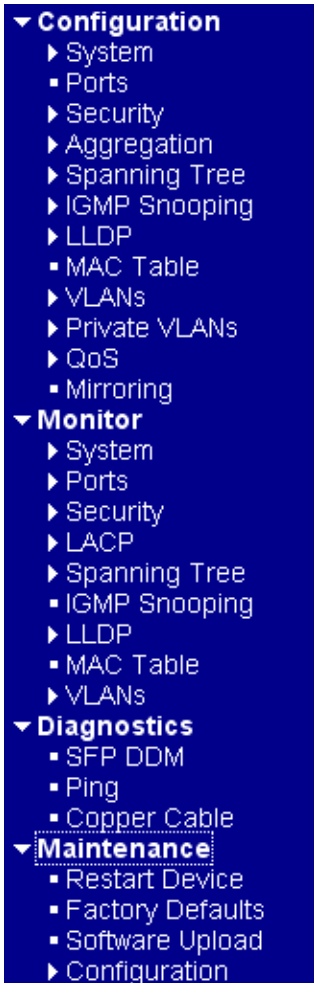
## Combo

- Copper
- Fiber SFP

## SFP Options

- Easy migration
- Easy upgrade
- Easy maintenance

# Advantage 2: Powerful Management



- Web UI
- Telnet CLI
- Console CLI
- SNMP Interface
- HTTPS Supports
- SSH Supports

# Advantage 3: Enhanced Security

- \* System password
- \* Authentication Method Configuration  
Console, Telnet, SSH, Web
- \* SSH Configuration
- \* HTTPS Configuration
- \* SNMPv3 Accesses Configuration
- \* 802.1x Access Server Configuration
- \* Access Control List

# Advantage 4: Power Options

## AC Power Input

KGS-2421-S :100~240 VAC, 50/60Hz



## DC Power Input

KGS-2421-D :+40 ~ +72 VDC



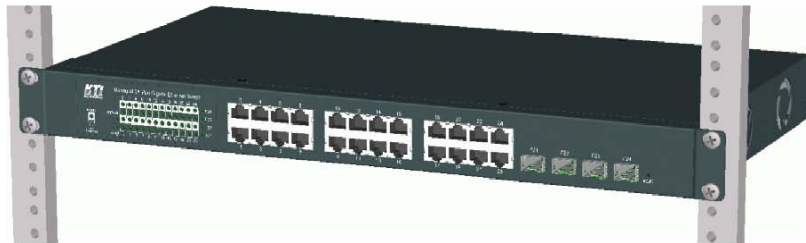
# Benefit 1: SFP DDM Support

Information	SFP P	
	21	22
Identifier	SFP transceiver	Not Applicable
Connector	LC	Not Applicable
SONET Compliance	Not Applicable	Not Applicable
GbE Compliance	1000BASE-LX	Not Applicable
Vendor Name	APAC Opto	Not Applicable
Vendor OUI	000F99	Not Applicable
Temperature	29 (C)	Not Applicable
Voltage	3324 (mini V)	Not Applicable
TX Power	72 (micro W)	Not Applicable

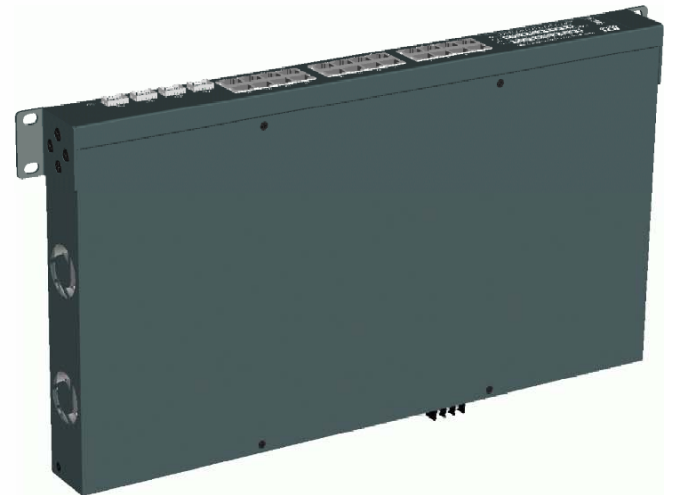
**Basic DDM Information  
&  
Real-time monitoring**  
Operating temperature  
Operating voltage  
Optical Transmitting Power

# Benefit 2: Mounting Flexibility

Industrial mounting

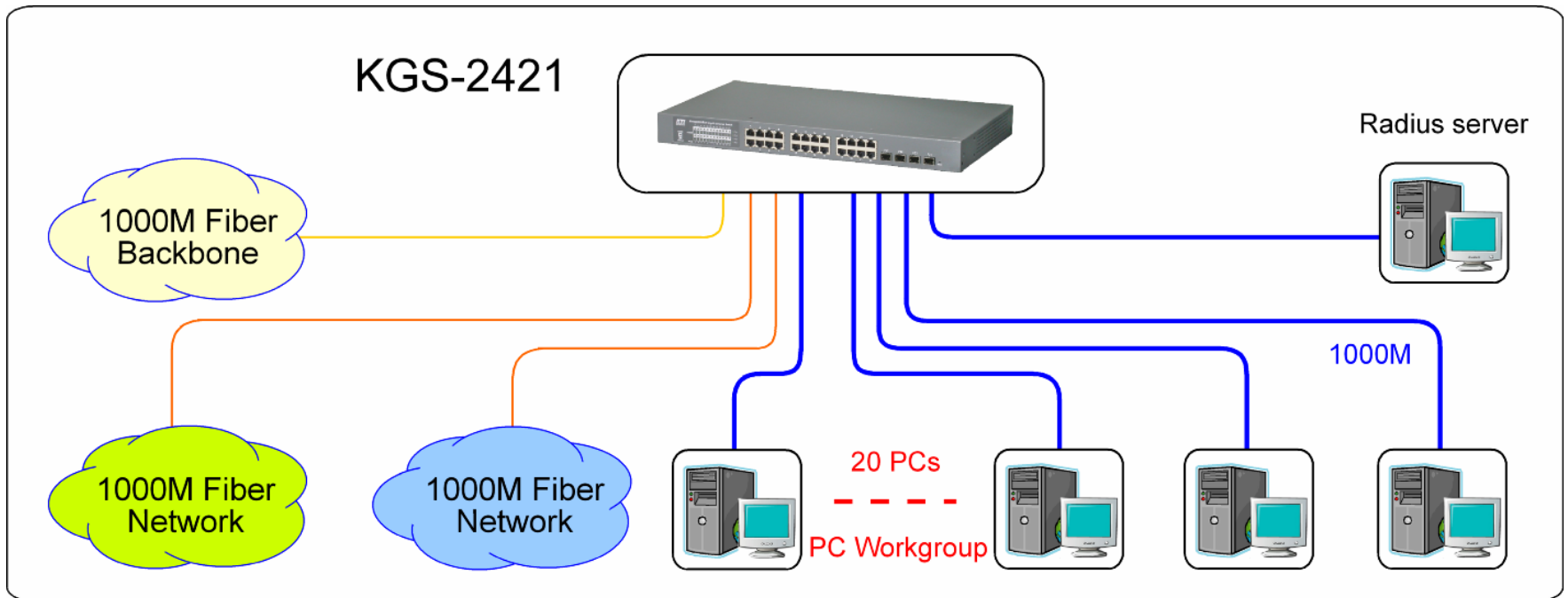


Wall mounting





# Application 1: Workgroup Switch



# Application 2: Edge Switch for VLAN

