

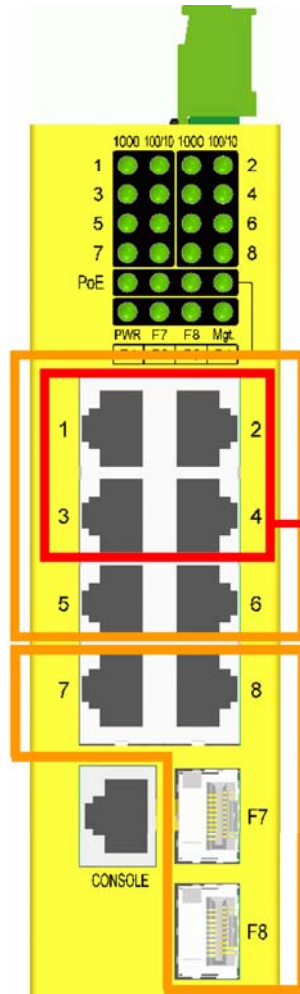
KGD-802-P / KGD-802

*Industrial 8-Ports Gigabit Ethernet Switches
with 2 SFP Slots and optional 4 PoE PSE Ports*



KGD-802-P/KGD-802

Specifications



Copper Ports

- 10/100/1000 Mbps RJ-45 support
- Auto-negotiation, Auto-MDI/MDI-X
- 802.3x flow control

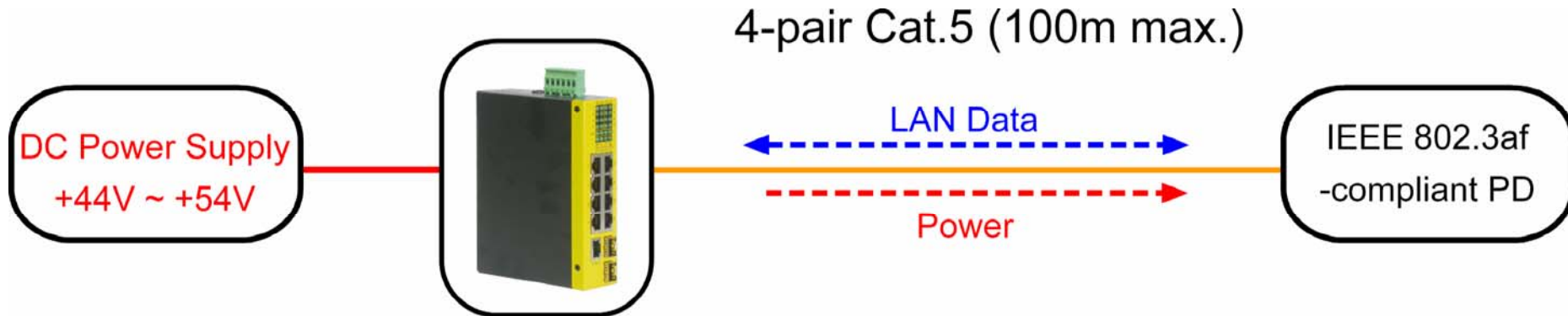
PSE Ports (KGD-802-P only)

- Power delivery 15.4W max.

Combo Ports

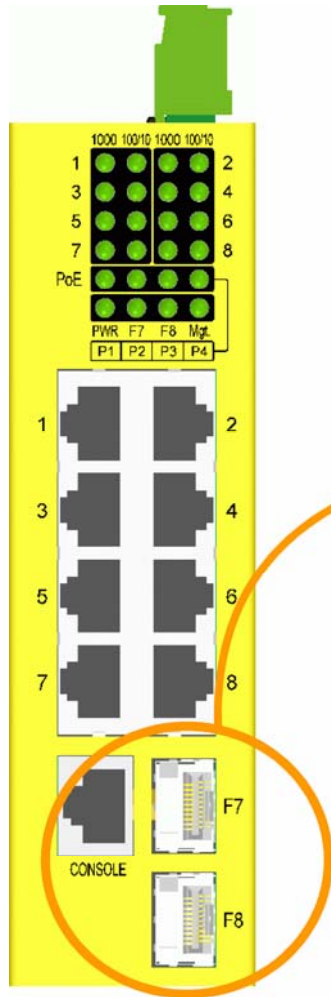
- 10/100/1000 Mbps RJ-45 support
- 1000 Mbps SFP support
- Digital Diagnostic Monitoring

Advantage 1: Power over Ethernet



Four IEEE 802.3af-compliant PoE PSE ports

Advantage 2: SFP Flexibility



Fiber Options

- Easy migration
- Easy upgrade
- Easy maintenance

Advantage 3: Powerful Management

All in one Compact Box



Configuration

System
Ports
VLAN
Aggregation
LACP
RSTP
802.1X
Mirroring
QoS
Storm Control

Monitoring

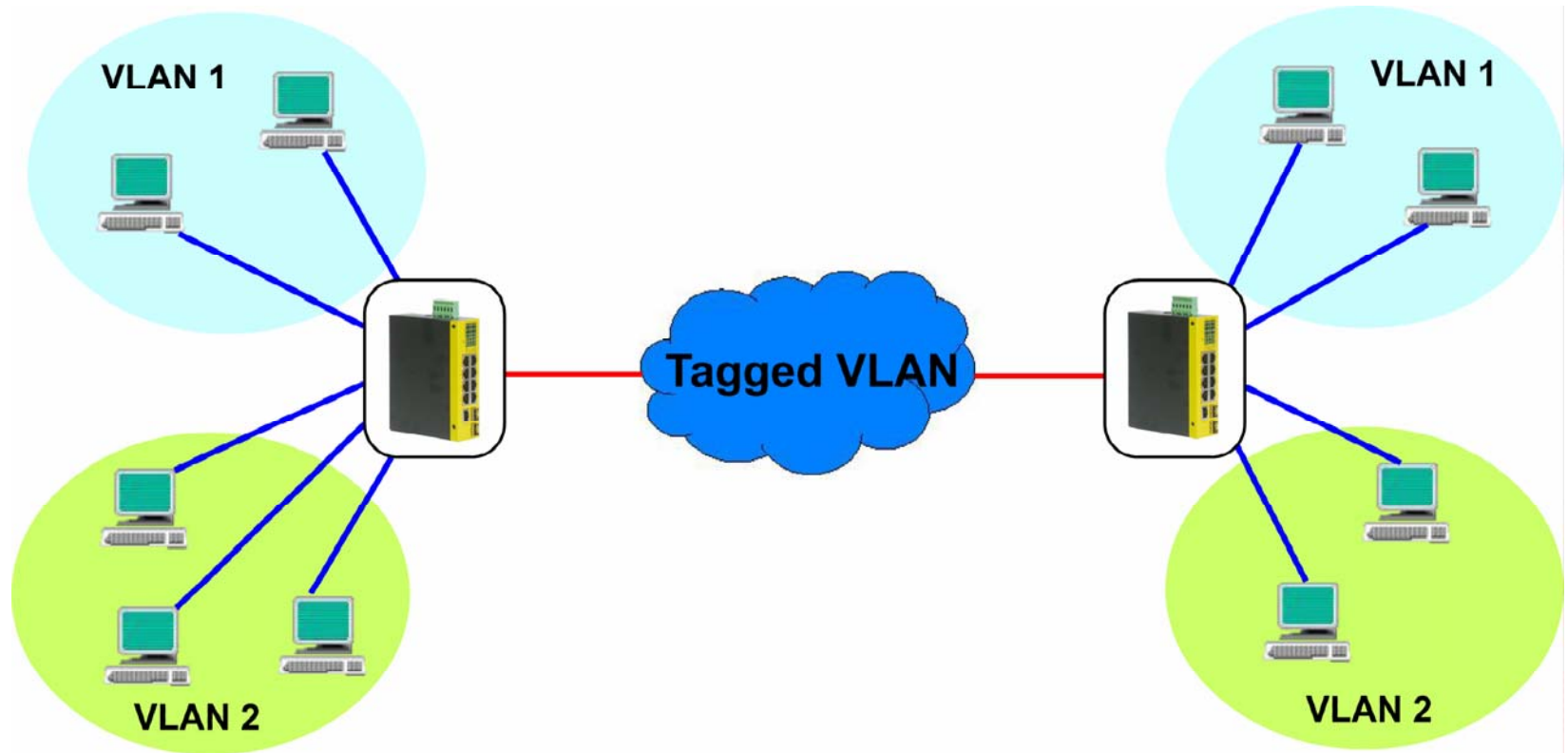
Statistics Overview
Detailed Statistics
LACP Status
RSTP Status
Ping

Maintenance

Reboot System
Restore Default
Update Firmware
Logout

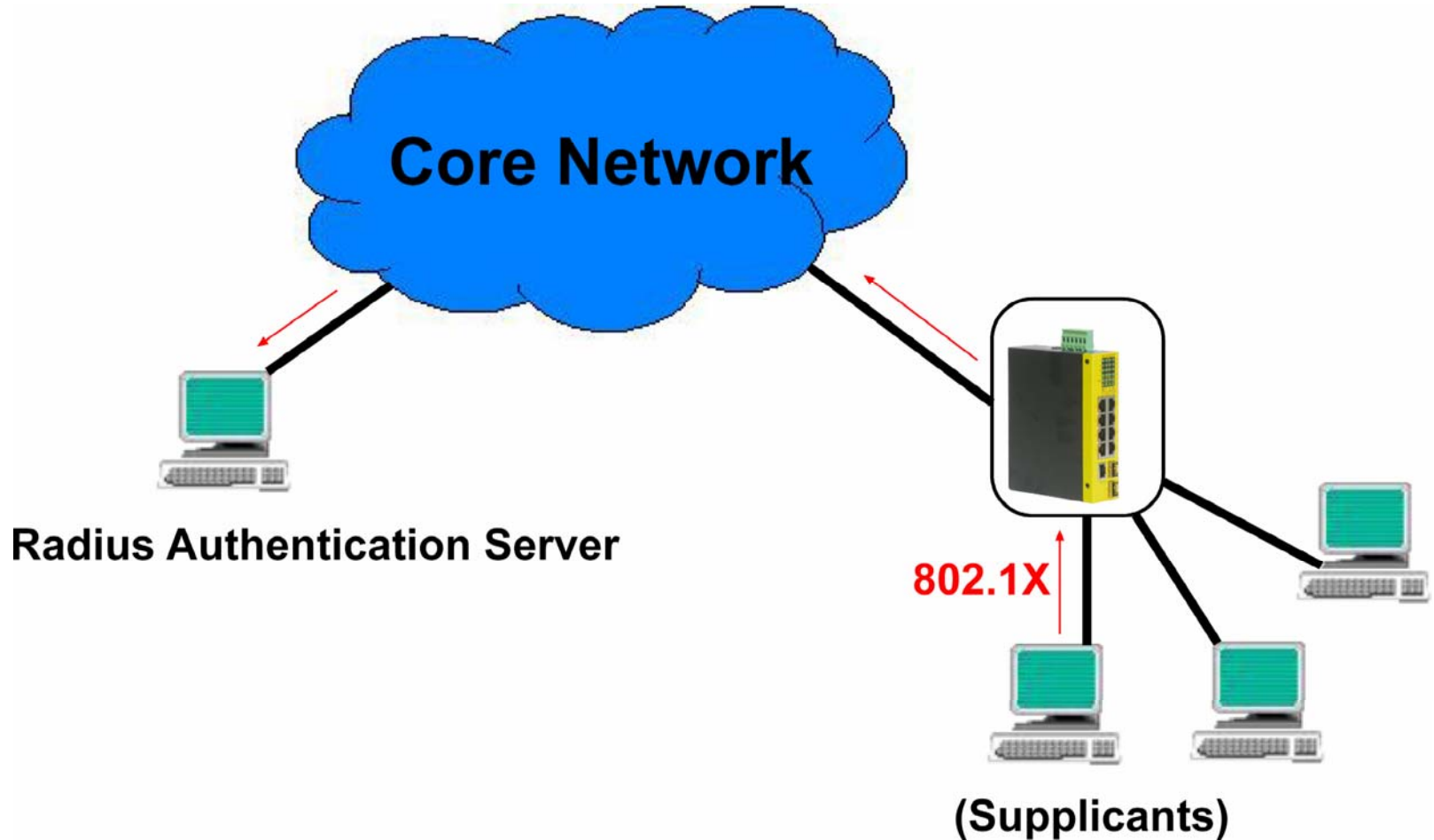
- Web/SNMP, SNMP event trap
- VLAN
- 802.1X
- RSTP, MSTP, LACP aggregation
- QoS, DHCP, Mirroring, Watchdog

Management 1: VLAN

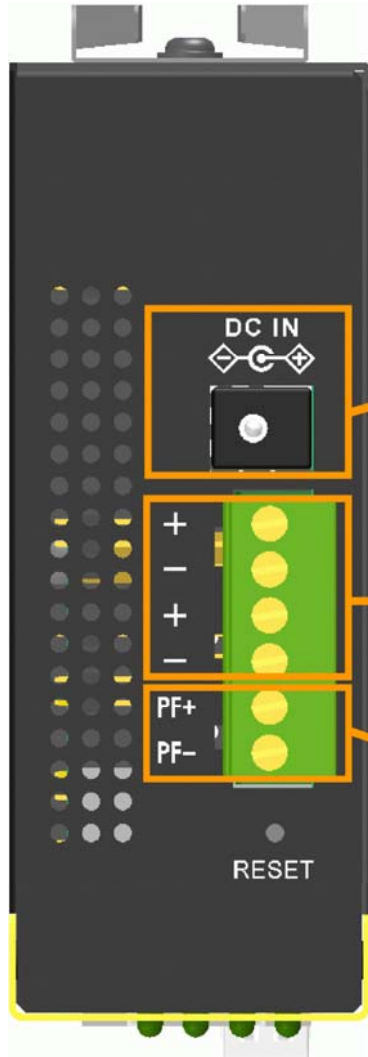


Set workgroups belonging to different VLANs

Management 2: 802.1X Authentication



Benefit 1: Power Interfaces



DC-Jack

Support AC-DC adapter type power

Terminal block

Support industrial power system

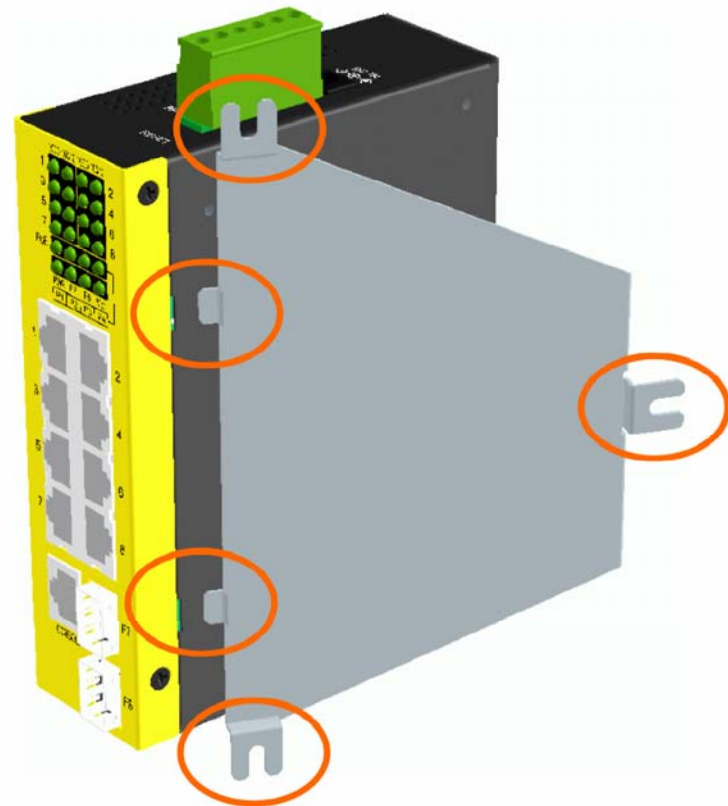
Alarm Relay Output

Support external monitoring system

Benefit 2: Mounting Flexibility

Din-Rail Mounting

Panel Mounting



Benefit 3 : SFP DDM Support

SFP DDM

Port	7	8
Identifier	N/A	SFP transceiver
Connector	N/A	LC
SONET Compliance	N/A	N/A
GbE Compliance	N/A	1000BASE-LX
Vendor Name	N/A	APAC Opto
Vendor OUI	N/A	000F99
Temperature	N/A	30 (C)
Voltage	N/A	3274 (mV)
TX Power	N/A	230 (µW)

Refresh Back

**Basic DDM Information
&
Real-time monitoring**
Operating temperature
Operating voltage
Optical Power

Benefit 4: Industrial Design

Wide Operating Temperature Range

Typical -20°C ~ 60°C

Wide Operating Voltage Range

No PoE : +6.5 ~ +54VDC ; PoE : +44 ~ +54VDC

Industrial Power Interfaces

Industrial screw terminal block and DC-Jack

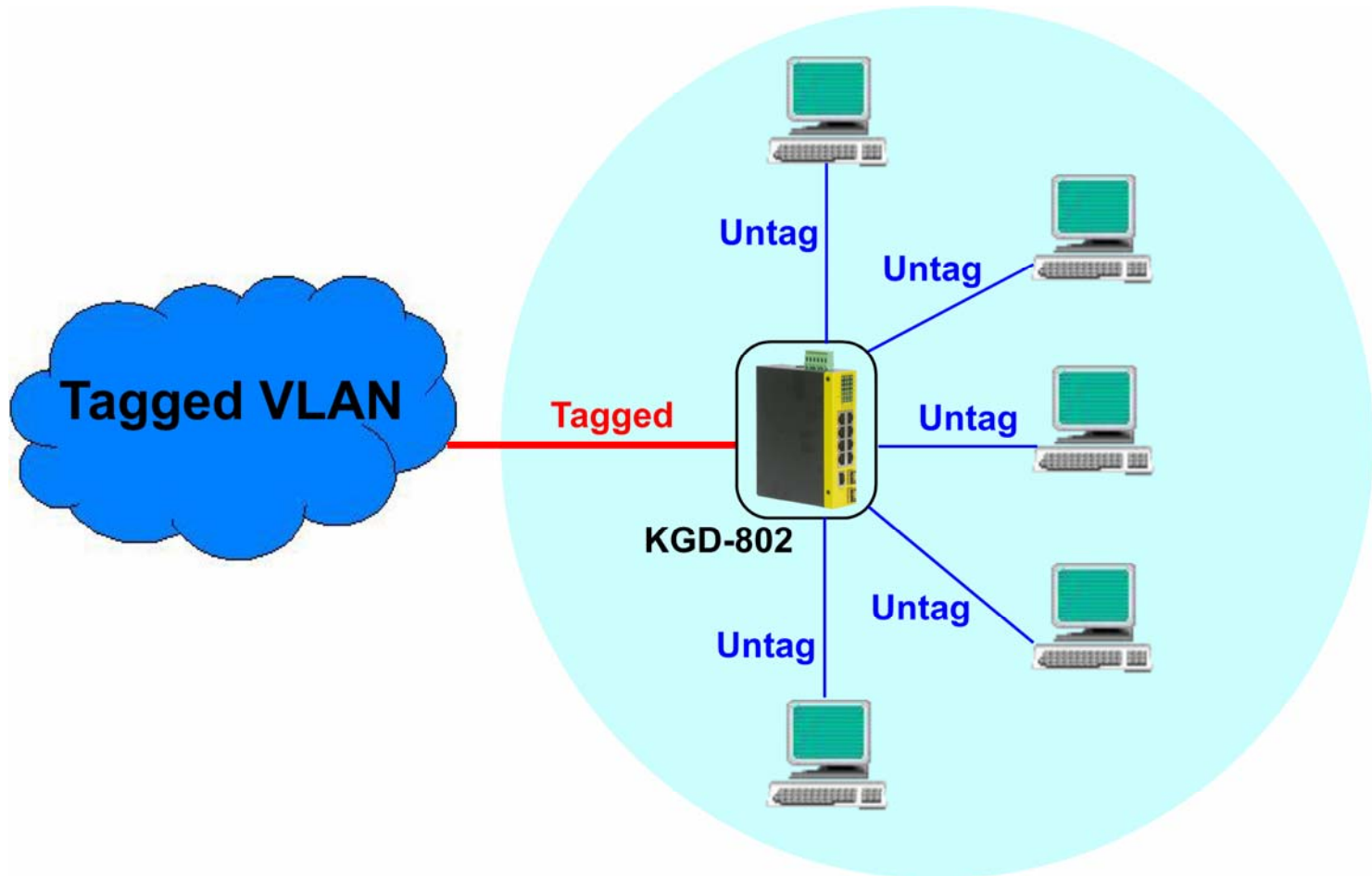
Industrial Mounting Support

Din-rail mounting, Panel mounting, Desktop mounting

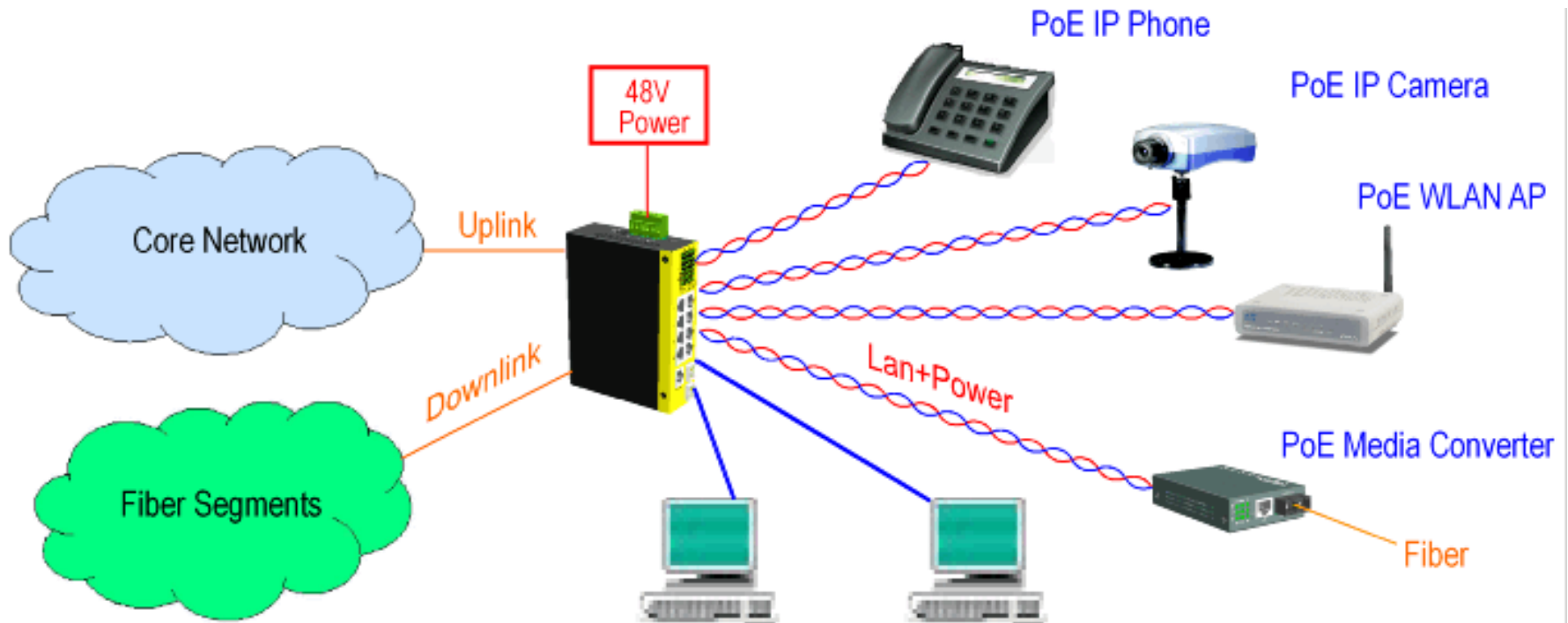
EMC & EMI

Industrial-rated Emission and Immunity performance

Application 1: Edge Switch for VLAN



Application 2: PoE Switch



Application Note 1:

Recommended Power

1. Power Supply Specification

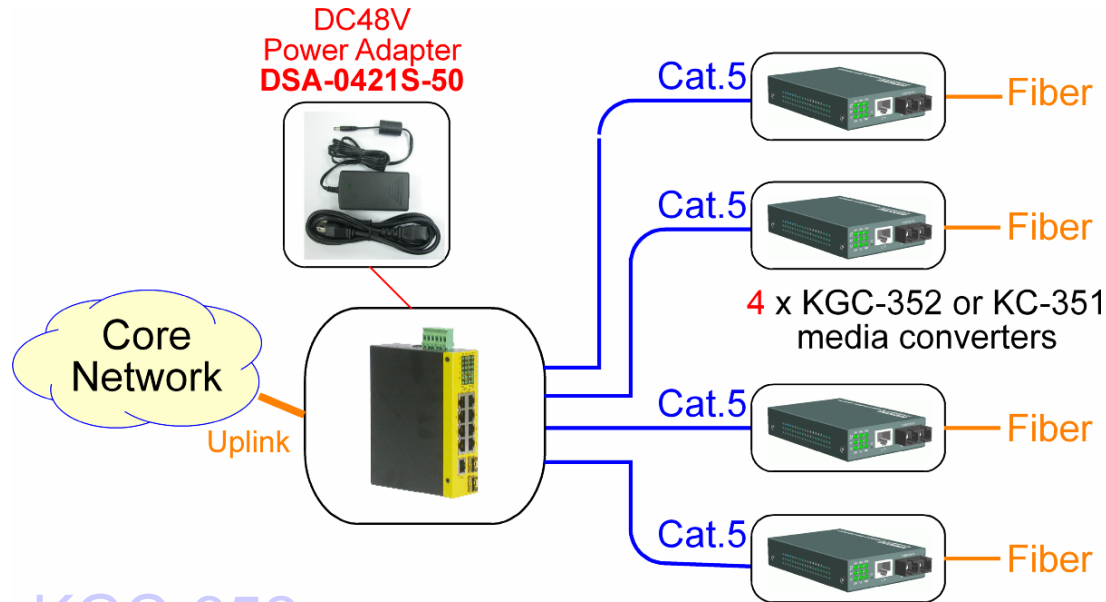
Item Power	Type	Vendor	KGD-802-P Interface	Rated Input Voltage	Rated Output Voltage	Rated Power	Application	Working Temp. (100% power)	De-rating
L02-0001-026 L02-0001-027	Power Adapter	KTI	DC-Jack	100-240V	12V	12W	Non-PoE	-10~60°C	None
L02-0001-031	Power Adapter	KTI	DC-Jack	100-240V	48V	24W	PoE	0~40°C	None
DR-7548	Din-Rail Power Supply	Meanwell	Terminator Block	90-264V	48V	76.8W	PoE	100% @-10~50°C	60%@60°C
MDR-10048	Din-Rail Power Supply	Meanwell	Terminator Block	85-264V	48V	96W	PoE	100% @-20~50°C	50%@70°C

De-rating: The power output efficiency is declined under the specified working temperature.

2. High Temperature Power Supply Specification

Item Power	Type	Vendor	KGD-802-P Interface	Rated Input Voltage	Rated Output Voltage	Rated Power	Application	Working Temp. (100% power)	De-rating
KPW-2012-D	Din-Rail Power Supply	KTI	DC-Jack or Terminator Block	100-240V	12V	21.6W	Non-PoE	100% @-20~50°C	50%@60°C

Application Note 2: Recommended PoE Media Converters



KGC-352

PoE Powered 1000BASE-T to 1000BASE-SX/LX Media Converters



KC-350/KC-351

PoE Powered 10/100BASE-TX to 100BASE-FX Media Converters