



KS-115/117FM-V – A compact VLAN workgroup switch

KTI Web Smart Managed 4/6-Port 10/100 Fast Ethernet Switches with 1 Fiber Connection

Introduction

The model KS-115/117FM-V are designed as high performance compact switches for departmental and enterprise connections, and they are carefully manufactured to comply with IEEE 802.3 10Base-T, IEEE802.3u 100Base-TX, and 100Base-FX standards. They are 4/6 10/100TX ports with 1x100FX port, and each TP port supports both auto-negotiation and auto-MDI/MDI-X detection. In addition, KS-115/117FM-V support variety of fiber connectors, including ST, SC, MT-RJ, VF-45, and LC. The built-in convenient web-based management support both tagged and port-based VLAN configuration, security check, reboot, etc. which can be done remotely to reduce administrative costs. KS-115/117FM-V is targeted at corporate networking infrastructure; it also delivers the easy management, great performance and high scalability.

Key benefits

Compact size

- Easy installation and relocation.
- Cost effective
- Space saving

Fiber Connection

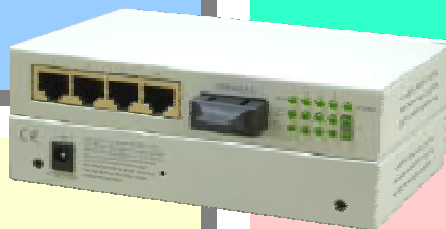
- Extended transmission distance. 2km, 20km, 50km, 70km.
- Fiber connection to backbone.
- Support Multi Fiber Connectors (ST, SC, MT-RJ, VF-45 and LC)

VLAN Function

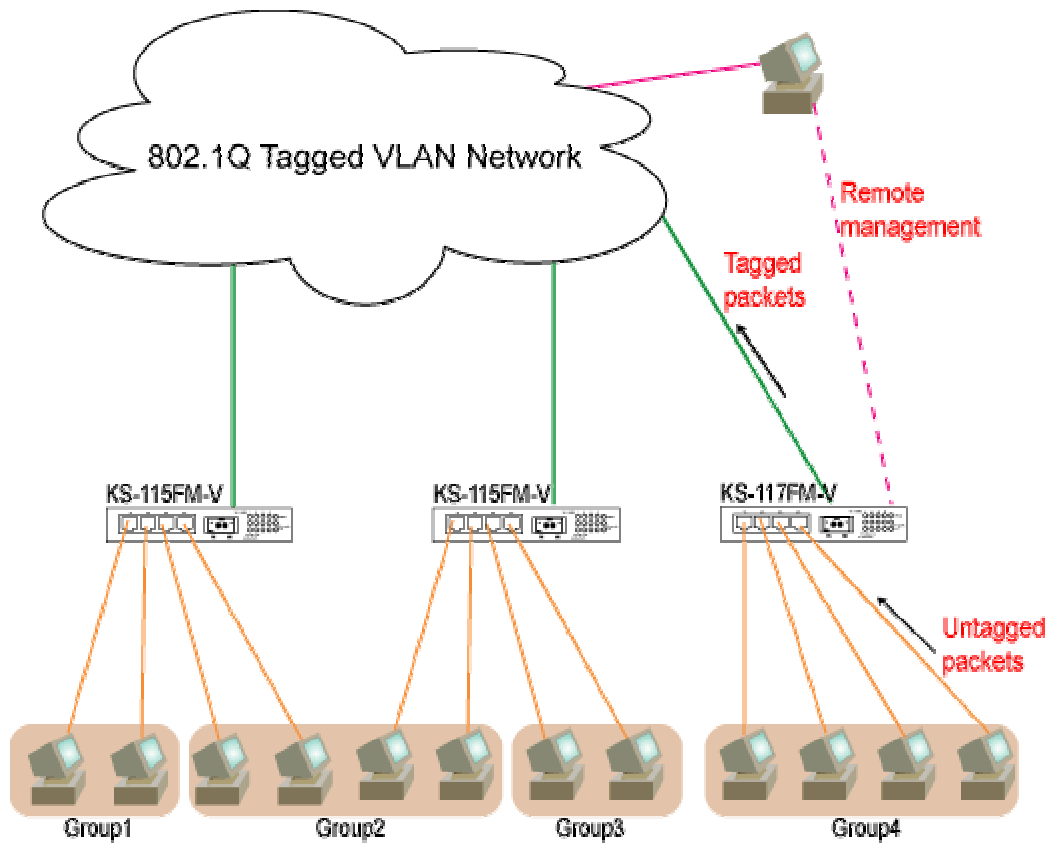
- Front-end device for 802.1Q tagged VLAN network
- Support Port-based & Tagged VLAN

Web Management

- Remote configuration
- Easy management
- Reduced administration costs
- Reduced maintenance costs



Implementation of VLAN with KS-115/117FM-V



Ideal Solutions

- Provide a solution for untagged devices to hook up with a tagged VLAN network (Groups4)
- Divide PCs connected to a single switch into multiple virtual groups. (Group 1)
- Integrate PCs dispersed in different network segment virtually into a single LAN (Group 2)

Highlights of VLAN Configuration

VLAN Mode

- Port-based VLAN
- IEEE 802.1Q Tag-based VLAN

Per Port Setting

- PVID: 12bits Full range
- Output Tag/Untag Mode

VLAN Group Setting

- VLAN Mapping Table, support up to 16 groups.