

Media Converters & Rack Center

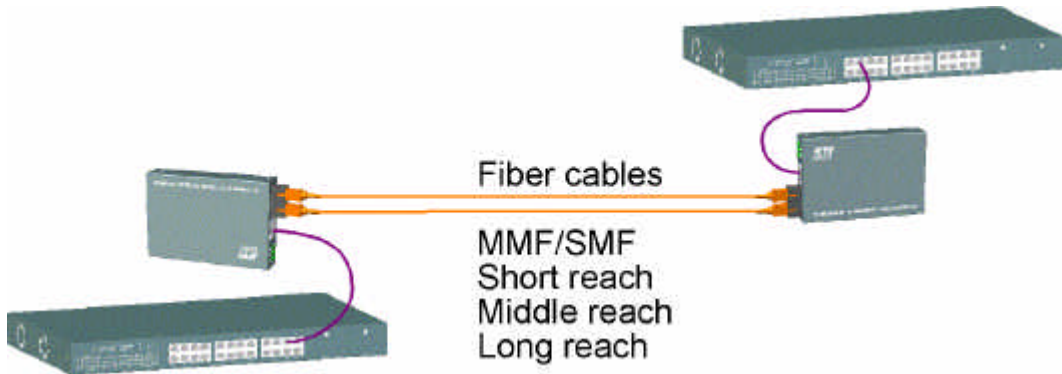
KC-300D KC-300DM KC-1300

Application Notes

Typical Applications

Extend Network Distance with Duplex Fibers

ST / SC / VF-45 / MT-RJ / Short Reach SMF / Long Reach SMF



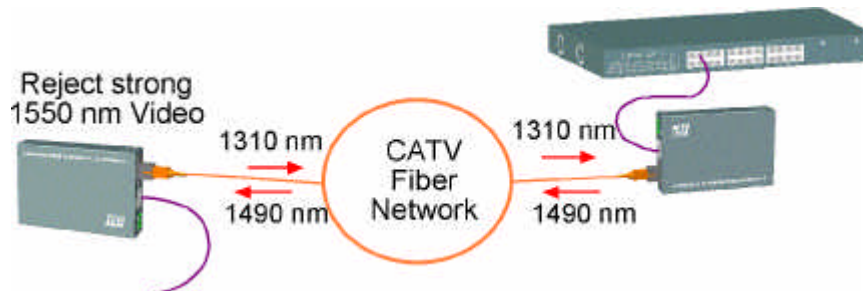
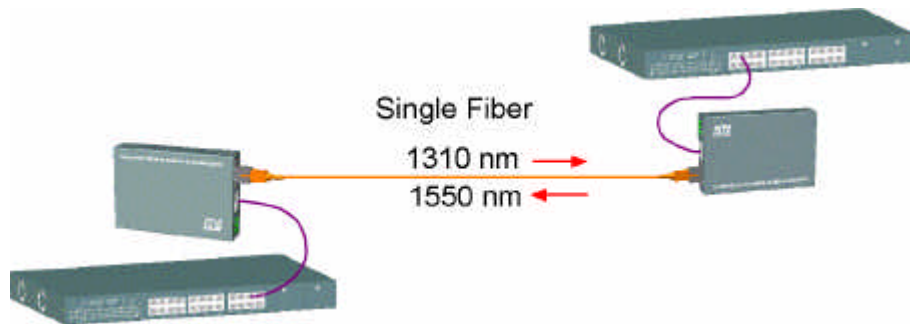
KC-300D-xxxx KC-300DM-xxxx			TX (nm)	RX (nm)	Power Budget	Fiber Distance
-T	ST	MMF	1310	1310	>12 dB	2 km
-C	SC	MMF	1310	1310	>12 dB	2 km
-JM	MT-RJ	MMF	1310	1310	>12 dB	2 km
-VM	VF-45	MMF	1310	1310	>11 dB	2 km
-SA2	SC	SMF	1310	1310	>16 dB	20 km
-SL2A	SC	SMF	1310	1310	>15 dB	20 km
-SL4	SC	SMF	1310	1310	>30 dB	50 km
-SL6	SC	SMF	1310	1310	>34 dB	70 km
-SL9	SC	SMF	1310	1310	>37 dB	90 km
-SL10	SC	SMF	1550	1550	>34 dB	100 km

Bi-Di WDM Applications

Bi-directional Communication via Single Fibers

1310/1550 nm (FTTH Single Fiber)

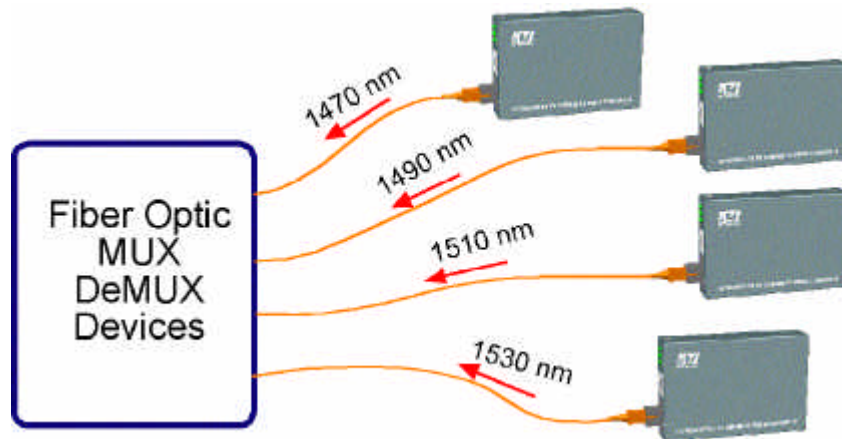
1310/1490 nm (Video-overlay)



KC-300D-Wxxxx KC-300DM-Wxxxx			TX (nm)	RX (nm)	Power Budget	Fiber Distance
-W320	SC	SMF	1310	1550	>19 dB	20 km
-W520	SC	SMF	1550	1310	>19 dB	20 km
-W340	SC	SMF	1310	1550	>25 dB	40 km
-W540	SC	SMF	1550	1310	>25 dB	40 km
-W3420	SC	SMF	1310	1490	>19 dB	20 km
-W4320	SC	SMF	1490	1310	>19 dB	20 km

Ethernet CWDM Applications

8 Channels - 1470 nm ~ 1610 nm



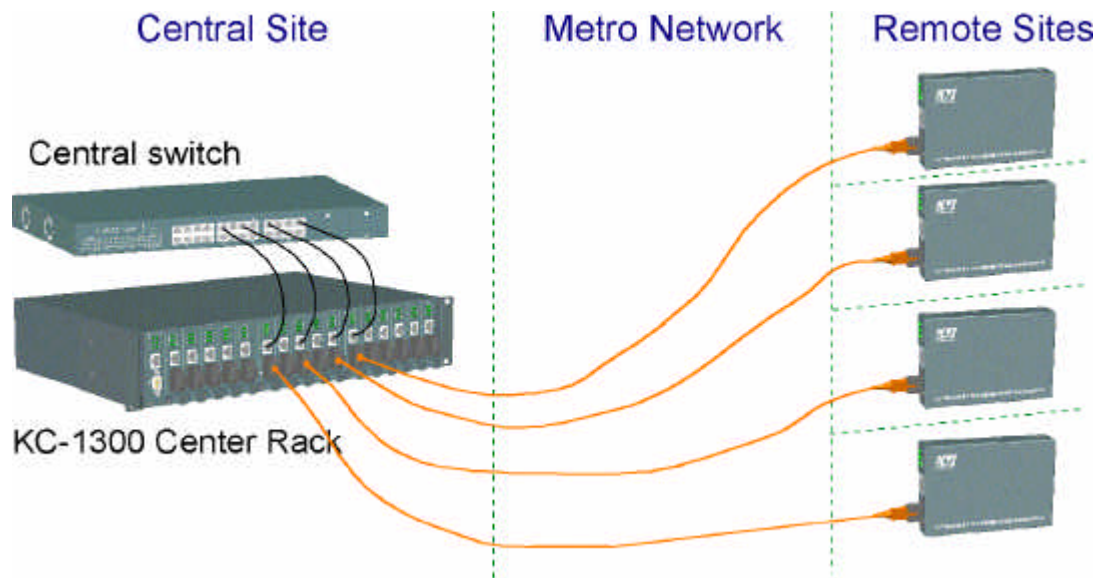
KC-300D-CxxW80 KC-300DM-CxxW80			TX (nm)	RX (nm)	Power Budget	Fiber Distance
-C47W80	SC	SMF	1470	1100~1620	>29 dB	80 km
-C49W80	SC	SMF	1490	1100~1620	>29 dB	80 km
-C51W80	SC	SMF	1510	1100~1620	>29 dB	80 km
-C53W80	SC	SMF	1530	1100~1620	>29 dB	80 km
-C55W80	SC	SMF	1550	1100~1620	>29 dB	80 km
-C57W80	SC	SMF	1570	1100~1620	>29 dB	80 km
-C59W80	SC	SMF	1590	1100~1620	>29 dB	80 km
-C61W80	SC	SMF	1610	1100~1620	>29 dB	80 km

Remark:

1. -CxxW100 Series with Power Budget >31dB also available (100 km)
2. -CxxW120 Series with Power Budget >34dB also available (120 km)
3. Products with single Rx wavelength (not wide range) can be customized by order request.

FTTH / FTTB Applications

From Center over Metro Network to Remote Sites



KC-1300

- 16 MC slots for KC-300D and KC-300DM
- Supports diversified and flexible fiber connections
- SNMP / Telnet / Web / Trap Management
- Redundant power supply
- Local MC monitoring
- Remote MC TP link monitoring
- Loop Back Test Function
- Link Fault Pass Through Function

Temperature Sensitive Applications

Operating Temperature 60°C ~ -20°C

KC-300D-Exxxx KC-300DM-Exxxx			TX (nm)	RX (nm)	Power Budget	Fiber Distance
-EC	SC	MMF	1310	1310	>15 dB	2 km
-EL2	SC	SMF	1310	1310	>14 dB	20 km
-EL5	SC	SMF	1310	1310	>29 dB	50 km
-EL10	SC	SMF	1550 DFB	1550	>33 dB	100 km

DIN-Rail Applications

DIN-Rail Mounting Kit

